

ARG44284 anti-SARM1 antibody

Package: 50 µl
Store at: -20°C

Summary

Product Description	Rabbit Polyclonal antibody recognizes SARM1
Tested Reactivity	Hu, Ms, Rat
Tested Application	ICC/IF, WB
Host	Rabbit
Clonality	Polyclonal
Isotype	IgG
Target Name	SARM1
Species	Human
Immunogen	Full length recombinant human SARM1 protein
Conjugation	Un-conjugated
Alternate Names	SARM1; Sterile Alpha And TIR Motif Containing 1; SAMD2; SARM; KIAA0524; Sterile Alpha And TIR Motif-Containing Protein 1; Sterile Alpha Motif Domain-Containing Protein 2; Sterile Alpha And Armadillo Repeat Protein; SAM Domain-Containing Protein 2

Application Instructions

Application table	Application	Dilution
	ICC/IF	1:50
	WB	1:1000
Application Note	* The dilutions indicate recommended starting dilutions and the optimal dilutions or concentrations should be determined by the scientist.	

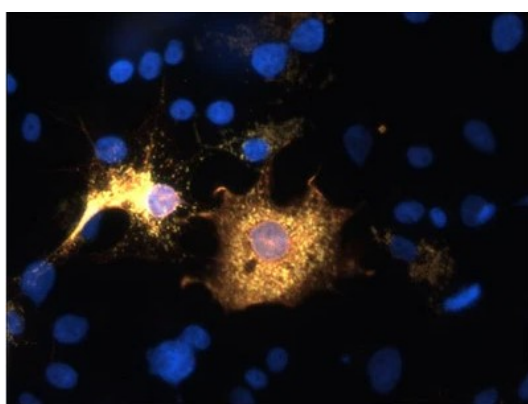
Properties

Form	Liquid
Purification	Antigen Affinity Purified
Buffer	10 mM HEPES (pH 7.5), 150 mM NaCl, 50% Glycerol and 100 µg/ml BSA.
Stabilizer	50% Glycerol and 100 µg/ml BSA
Storage instruction	For continuous use, store undiluted antibody at 2-8°C for up to a week. For long-term storage, aliquot and store at -20°C. Storage in frost free freezers is not recommended. Avoid repeated freeze/thaw cycles. Suggest spin the vial prior to opening. The antibody solution should be gently mixed before use.
Note	For laboratory research only, not for drug, diagnostic or other use.

Bioinformation

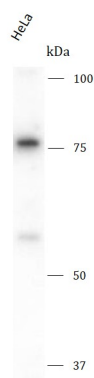
Gene Symbol	SARM1
Gene Full Name	Sterile Alpha And TIR Motif Containing 1
Background	Enables NAD ⁺ nucleotidase, cyclic ADP-ribose generating and identical protein binding activity. Involved in NAD catabolic process; positive regulation of neuron death; and response to axon injury. Located in mitochondrion.
Function	Involved in innate immune response: inhibits both TICAM1/TRIF- and MYD88-dependent activation of JUN/AP-1, TRIF-dependent activation of NF-kappa-B and IRF3, and the phosphorylation of MAPK14/p38.
Calculated Mw	79 kDa
PTM	Phosphoprotein
Cellular Localization	Cell projection, Cytoplasm, Mitochondrion, Synapse

Images



ARG44284 anti-SARM1 antibody ICC/IF image

Immunofluorescence: COS-7 stained with ARG44284 anti-SARM1 antibody.



ARG44284 anti-SARM1 antibody WB image

Western blot: HeLa stained with ARG44284 anti-SARM1 antibody.