

ARG44287 anti-Slingshot homolog 1 / SSH1 antibody

Package: 100 µl
Store at: -20°C

Summary

Product Description	Rabbit Polyclonal antibody recognizes Slingshot homolog 1 / SSH1
Tested Reactivity	Hu, Ms, Rat
Tested Application	ICC/IF, IHC-P, WB
Specificity	This antibody recognize Slingshot homolog 1 / SSH1 isoform L.
Host	Rabbit
Clonality	Polyclonal
Isotype	IgG
Target Name	SSH1
Species	Human
Immunogen	Synthetic peptide
Conjugation	Un-conjugated
Alternate Names	SSH1; Slingshot Protein Phosphatase 1; SSH1L; KIAA1298; Protein Phosphatase Slingshot Homolog 1; SSH-Like Protein 1; HSSH-1L; Slingshot Homolog 1 (Drosophila); Slingshot Homolog 1

Application Instructions

Application table	Application	Dilution
	ICC/IF	1:250
	IHC-P	1:100
	WB	1:1000
Application Note	* The dilutions indicate recommended starting dilutions and the optimal dilutions or concentrations should be determined by the scientist.	

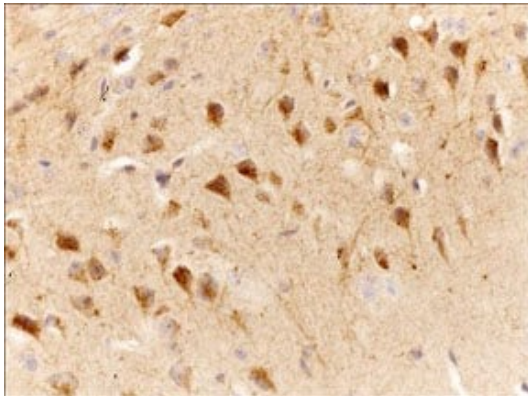
Properties

Form	Liquid
Purification	Antigen Affinity Purified
Buffer	PBS with 1 mg/ml BSA, 0.05% Sodium azide and 50% glycerol
Preservative	0.05% Sodium azide
Stabilizer	1 mg/ml BSA and 50% glycerol
Storage instruction	For continuous use, store undiluted antibody at 2-8°C for up to a week. For long-term storage, aliquot and store at -20°C. Storage in frost free freezers is not recommended. Avoid repeated freeze/thaw cycles. Suggest spin the vial prior to opening. The antibody solution should be gently mixed before use.
Note	For laboratory research only, not for drug, diagnostic or other use.

Bioinformation

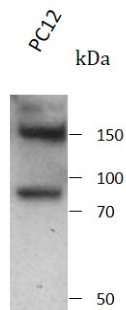
Gene Symbol	SSH1
Gene Full Name	Slingshot Protein Phosphatase 1
Background	The protein encoded by this gene belongs to the slingshot homolog (SSH) family of phosphatases, which regulate actin filament dynamics. The SSH proteins dephosphorylate and activate the actin binding/depolymerizing factor cofilin, which subsequently binds to actin filaments and stimulates their disassembly. Cofilin is inactivated by kinases such as LIM domain kinase-1 (LIMK1), which may also be dephosphorylated and inactivated by SSH proteins. The SSH family thus appears to play a role in actin dynamics by reactivating cofilin proteins. Alternatively spliced transcript variants encoding different isoforms have been described for this gene.
Function	Protein phosphatase which regulates actin filament dynamics. Dephosphorylates and activates the actin binding/depolymerizing factor cofilin, which subsequently binds to actin filaments and stimulates their disassembly. Inhibitory phosphorylation of cofilin is mediated by LIMK1, which may also be dephosphorylated and inactivated by this protein.
Calculated Mw	116 kDa
PTM	Acetylation, Phosphoprotein
Cellular Localization	Cell projection, Cytoplasm, Cytoskeleton

Images



ARG44287 anti-Slingshot homolog 1 / SSH1 antibody IHC-P image

Immunohistochemistry: mouse cerebral stained with ARG44287 anti-Slingshot homolog 1 / SSH1 antibody.



ARG44287 anti-Slingshot homolog 1 / SSH1 antibody WB image

Western blot: PC12 stained with ARG44287 anti-Slingshot homolog 1 / SSH1 antibody.