

ARG44290 anti-nSMase3 antibody

Package: 100 µl
Store at: -20°C

Summary

Product Description	Rabbit Polyclonal antibody recognizes nSMase3
Tested Reactivity	Hu, Ms, Rat
Tested Application	ICC/IF, IP, WB
Host	Rabbit
Clonality	Polyclonal
Isotype	IgG
Target Name	nSMase-3
Species	Mouse
Immunogen	nSMase3 synthetic peptide
Conjugation	Un-conjugated
Alternate Names	SMPD4; Sphingomyelin Phosphodiesterase 4; KIAA1418; NSMASE3; NET13; Sphingomyelin Phosphodiesterase 4, Neutral Membrane (Neutral Sphingomyelinase-3); Neutral Sphingomyelinase III; Neutral Sphingomyelinase 3; FLJ20297; FLJ20756; NSMase-3; NSMASE-3; SKNY; Neutral Sphingomyelinase-3; EC 3.1.4.12; NEDMABA; NEDMEBA; NSMase3

Application Instructions

Application table	Application	Dilution
	ICC/IF	1:250
	IP	1:100
	WB	1:1000
Application Note	* The dilutions indicate recommended starting dilutions and the optimal dilutions or concentrations should be determined by the scientist.	

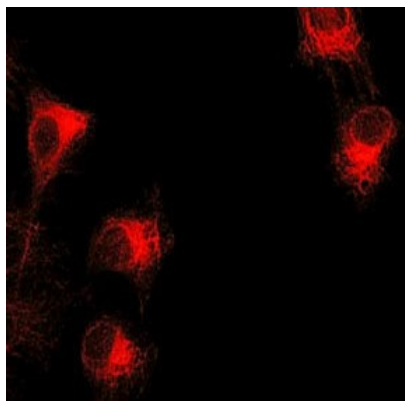
Properties

Form	Liquid
Purification	Antigen Affinity Purified
Buffer	PBS with 1 mg/ml BSA, 0.05% Sodium azide and 50% glycerol
Preservative	0.05% Sodium azide
Stabilizer	1 mg/ml BSA and 50% glycerol
Storage instruction	For continuous use, store undiluted antibody at 2-8°C for up to a week. For long-term storage, aliquot and store at -20°C. Storage in frost free freezers is not recommended. Avoid repeated freeze/thaw cycles. Suggest spin the vial prior to opening. The antibody solution should be gently mixed before use.
Note	For laboratory research only, not for drug, diagnostic or other use.

Bioinformation

Gene Symbol	SMPD4
Gene Full Name	Sphingomyelin Phosphodiesterase 4
Background	The protein encoded by this gene is a sphingomyelinase that catalyzes the hydrolysis of membrane sphingomyelin to form phosphorylcholine and ceramide. This gene is activated by DNA damage, cellular stress, and tumor necrosis factor, but it is downregulated by wild-type p53. The encoded protein localizes to the endoplasmic reticulum and Golgi network.
Function	Catalyzes the hydrolysis of membrane sphingomyelin to form phosphorylcholine and ceramide.
Calculated Mw	98 kDa
PTM	Phosphoprotein
Cellular Localization	Cell membrane; Endoplasmic reticulum; Golgi apparatus; Membrane; Nucleus

Images



ARG44290 anti-nSMase3 antibody ICC/IF image

Immunofluorescence: C2C12 stained with ARG44290 anti-nSMase3 antibody.