

**ARG44305**  
**anti-SLC45A3 antibody**Package: 50 µl  
Store at: -20°C

### Summary

Product Description	Rabbit Polyclonal antibody recognizes SLC45A3
Tested Reactivity	Hu
Tested Application	WB
Host	Rabbit
Clonality	Polyclonal
Isotype	IgG
Target Name	SLC45A3
Species	Human
Immunogen	Synthetic peptide
Conjugation	Un-conjugated
Alternate Names	SLC45A3; Solute Carrier Family 45 Member 3; Prostein; PCANAP6; IPCA-6

### Application Instructions

Application table	Application	Dilution
	WB	1:500-1:1000
Application Note	* The dilutions indicate recommended starting dilutions and the optimal dilutions or concentrations should be determined by the scientist.	

### Properties

Form	Liquid
Purification	Antigen Affinity Purified
Buffer	PBS with 0.02% Sodium azide
Preservative	0.02% Sodium azide
Storage instruction	For continuous use, store undiluted antibody at 2-8°C for up to a week. For long-term storage, aliquot and store at -20°C. Storage in frost free freezers is not recommended. Avoid repeated freeze/thaw cycles. Suggest spin the vial prior to opening. The antibody solution should be gently mixed before use.
Note	For laboratory research only, not for drug, diagnostic or other use.

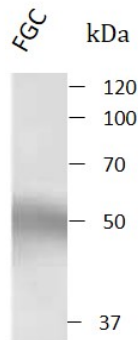
### Bioinformation

Gene Symbol	SLC45A3
Gene Full Name	Solute Carrier Family 45 Member 3

Background	Predicted to enable sucrose:proton symporter activity. Predicted to be involved in positive regulation of small molecule metabolic process; regulation of oligodendrocyte differentiation; and sucrose transport. Predicted to be located in plasma membrane. Predicted to be active in membrane.
Function	Proton-associated sucrose transporter. May be able to transport also glucose and fructose.
Calculated Mw	59 kDa
Cellular Localization	Membrane

Images

---



ARG44305 anti-SLC45A3 antibody WB image

Western blot: LNCaP-FGC stained with ARG44305 anti-SLC45A3 antibody.