

ARG44309 anti-Dclre1c / Artemis antibody

Package: 50 µl
Store at: -20°C

Summary

| | |
|---------------------|--|
| Product Description | Rabbit Polyclonal antibody recognizes Dclre1c / Artemis |
| Tested Reactivity | Hu |
| Tested Application | WB |
| Host | Rabbit |
| Clonality | Polyclonal |
| Isotype | IgG |
| Target Name | Dclre1c / Artemis |
| Species | Human |
| Immunogen | Synthetic peptide |
| Conjugation | Un-conjugated |
| Alternate Names | DCLRE1C; DNA Cross-Link Repair 1C; SNM1C; ARTEMIS; A-SCID; SCIDA |

Application Instructions

| | | |
|-------------------|--|--------------|
| Application table | Application | Dilution |
| | WB | 1:500-1:1000 |
| Application Note | * The dilutions indicate recommended starting dilutions and the optimal dilutions or concentrations should be determined by the scientist. | |

Properties

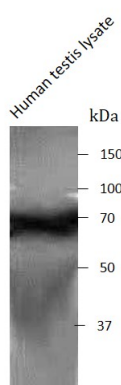
| | |
|---------------------|---|
| Form | Liquid |
| Purification | Antigen Affinity Purified |
| Buffer | PBS with 0.02% Sodium azide |
| Preservative | 0.02% Sodium azide |
| Storage instruction | For continuous use, store undiluted antibody at 2-8°C for up to a week. For long-term storage, aliquot and store at -20°C. Storage in frost free freezers is not recommended. Avoid repeated freeze/thaw cycles. Suggest spin the vial prior to opening. The antibody solution should be gently mixed before use. |
| Note | For laboratory research only, not for drug, diagnostic or other use. |

Bioinformation

| | |
|----------------|--------------------------|
| Gene Symbol | DCLRE1C |
| Gene Full Name | DNA Cross-Link Repair 1C |

| | |
|-----------------------|--|
| Background | This gene encodes a nuclear protein that is involved in V(D)J recombination and DNA repair. The encoded protein has single-strand-specific 5'-3' exonuclease activity; it also exhibits endonuclease activity on 5' and 3' overhangs and hairpins. The protein also functions in the regulation of the cell cycle in response to DNA damage. Mutations in this gene can cause Athabaskan-type severe combined immunodeficiency (SCIDA) and Omenn syndrome. Alternative splicing results in multiple transcript variants. |
| Function | Nuclease involved in DNA non-homologous end joining (NHEJ); required for double-strand break repair and V(D)J recombination. |
| Calculated Mw | 78 kDa |
| PTM | Phosphoprotein |
| Cellular Localization | Nucleus |

Images



ARG44309 anti-Dclre1c / Artemis antibody WB image

Western blot: Human testis lysate stained with ARG44309 anti-Dclre1c / Artemis antibody.