

ARG44356 anti-LACTB antibody

Package: 100 µl
Store at: -20°C

Summary

Product Description	Rabbit Polyclonal antibody recognizes LACTB
Tested Reactivity	Hu, Ms
Tested Application	WB
Host	Rabbit
Clonality	Polyclonal
Isotype	IgG
Target Name	LACTB
Species	Human
Immunogen	Human LACTB recombinant fusion protein (a.a. sequence: 50-154).
Conjugation	Un-conjugated
Alternate Names	LACTB; Lactamase Beta; MRPL56; Serine Beta-Lactamase-Like Protein LACTB, Mitochondrial; Serine Beta-Lactamase-Like Protein, Mitochondrial; FLJ14902; Mitochondrial 39S Ribosomal Protein L56; Mitochondrial Ribosomal Protein L56; EC 3.4.-.- ; G24

Application Instructions

Application table	Application	Dilution
	WB	1:500 - 1:2000
Application Note	* The dilutions indicate recommended starting dilutions and the optimal dilutions or concentrations should be determined by the scientist.	

Properties

Form	Liquid
Purification	Affinity purified.
Buffer	PBS, 0.01% Thimerosal and 50% Glycerol.
Preservative	0.01% Thimerosal
Stabilizer	50% Glycerol
Storage instruction	For continuous use, store undiluted antibody at 2-8°C for up to a week. For long-term storage, aliquot and store at -20°C. Storage in frost free freezers is not recommended. Avoid repeated freeze/thaw cycles. Suggest spin the vial prior to opening. The antibody solution should be gently mixed before use.
Note	For laboratory research only, not for drug, diagnostic or other use.

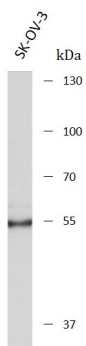
Bioinformation

Gene Symbol	LACTB
Gene Full Name	Lactamase Beta
Background	This gene encodes a mitochondrially-localized protein that has sequence similarity to prokaryotic beta-lactamases. Many of the residues responsible for beta-lactamase activity are not conserved in this protein, suggesting it may have a different enzymatic function. Increased expression of the related mouse gene was found to be associated with obesity. Alternative splicing results in multiple transcript variants encoding different protein isoform
Function	Mitochondrial serine protease that acts as a regulator of mitochondrial lipid metabolism.
Calculated Mw	61 kDa
PTM	Acetylation
Cellular Localization	Mitochondrion

Images

ARG44356 anti-LACTB antibody WB image

Western blot: SK-OV-3 stained with ARG44356 anti-LACTB antibody at 1:1000 dilution.



ARG44356 anti-LACTB antibody WB image

Western blot: Mouse Testis stained with ARG44356 anti-LACTB antibody at 1:1000 dilution.

