

ARG44393 anti-MAP4K5 antibody

Package: 50 µg
Store at: -20°C

Summary

Product Description	Rabbit Polyclonal antibody recognizes MAP4K5
Tested Reactivity	Hu
Tested Application	FACS, WB
Host	Rabbit
Clonality	Polyclonal
Isotype	IgG
Target Name	MAP4K5
Species	Human
Immunogen	Human MAP4K5 recombinant protein (aa. sequence: M1-Q733).
Conjugation	Un-conjugated
Alternate Names	MAP4K5; Mitogen-Activated Protein Kinase Kinase Kinase Kinase 5; KHS; KHS1; GCKR; MAPK/ERK Kinase Kinase Kinase 5; Kinase Homologous To SPS1/STE20; Germinal Center Kinase-Related; MEK Kinase Kinase 5

Application Instructions

Application table	Application	Dilution
	FACS	1-3 µg/1x10 ⁶ cells
	WB	0.25-0.5 µg/ml
Application Note	The dilutions indicate recommended starting dilutions and the optimal dilutions or concentrations should be determined by the scientist.	

Properties

Form	Liquid
Purification	Affinity purified with Immunogen.
Buffer	0.9% NaCl, 0.2% Na ₂ HPO ₄ , 0.05% Sodium azide and 4% Trehalose.
Preservative	0.05% Sodium azide
Stabilizer	4% Trehalose
Concentration	0.5 mg/ml
Storage instruction	For continuous use, store undiluted antibody at 2-8°C for up to a week. For long-term storage, aliquot and store at -20°C or below. Storage in frost free freezers is not recommended. Avoid repeated freeze/thaw cycles. Suggest spin the vial prior to opening. The antibody solution should be gently mixed before use.
Note	For laboratory research only, not for drug, diagnostic or other use.

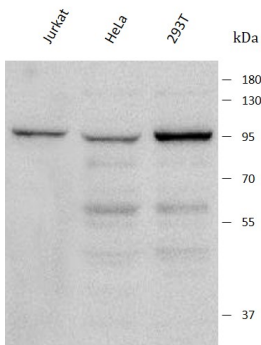
Bioinformation

Gene Symbol	MAP4K5
Gene Full Name	Mitogen-Activated Protein Kinase Kinase Kinase Kinase 5
Background	This gene encodes a member of the serine/threonine protein kinase family, that is highly similar to yeast SPS1/STE20 kinase. Yeast SPS1/STE20 functions near the beginning of the MAP kinase signal cascades that is essential for yeast pheromone response. This kinase was shown to activate Jun kinase in mammalian cells, which suggested a role in stress response. Two alternatively spliced transcript variants encoding the same protein have been described for this gene.
Function	May play a role in the response to environmental stress. Appears to act upstream of the JUN N-terminal pathway.
Calculated Mw	95 kDa
PTM	Phosphoprotein
Cellular Localization	Cytoplasm

Images

ARG44393 anti-MAP4K5 antibody WB image

Western blot: Jurkat, HeLa and 293T stained with ARG44393 anti-MAP4K5 antibody at 0.5 µg/mL dilution.



ARG44393 anti-MAP4K5 antibody FACS image

Flow Cytometry: HepG2 stained with ARG44393 anti-MAP4K5 antibody at 1 µg/10⁶ cells dilution.

