

ARG44407 anti-LRIG2 antibody

Package: 50 µg
Store at: -20°C

Summary

Product Description	Rabbit Polyclonal antibody recognizes LRIG2
Tested Reactivity	Hu
Tested Application	FACS, ICC/IF, WB
Host	Rabbit
Clonality	Polyclonal
Isotype	IgG
Target Name	LRIG2
Species	Human
Immunogen	Human LRIG2 recombinant protein (aa. sequence: E108-R977).
Conjugation	Un-conjugated
Alternate Names	LRIG2; Leucine Rich Repeats And Immunoglobulin Like Domains 2; KIAA0806 2; Leucine-Rich Repeats And Immunoglobulin-Like Domains Protein 2; LIG-2; LIG2; UFS2

Application Instructions

Application table	Application	Dilution
	FACS	1-3 µg/1x10 ⁶ cells
	ICC/IF	5 µg/ml
	WB	0.25-0.5 µg/ml
Application Note	The dilutions indicate recommended starting dilutions and the optimal dilutions or concentrations should be determined by the scientist.	

Properties

Form	Liquid
Purification	Affinity purified with Immunogen.
Buffer	0.9% NaCl, 0.2% Na ₂ HPO ₄ , 0.05% Sodium azide and 4% Trehalose.
Preservative	0.05% Sodium azide
Stabilizer	4% Trehalose
Concentration	0.5 mg/ml
Storage instruction	For continuous use, store undiluted antibody at 2-8°C for up to a week. For long-term storage, aliquot and store at -20°C or below. Storage in frost free freezers is not recommended. Avoid repeated freeze/thaw cycles. Suggest spin the vial prior to opening. The antibody solution should be gently mixed before use.

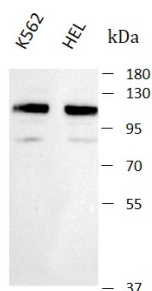
Bioinformation

Gene Symbol	LRIG2
Gene Full Name	Leucine Rich Repeats And Immunoglobulin Like Domains 2
Background	This gene encodes a transmembrane protein containing leucine-rich repeats and immunoglobulin-like domains. The encoded protein promotes epidermal growth factor signalling, resulting in increased proliferation. Its expression in the cytoplasm of glioma cells is correlated with poor survival. Mutations in this gene can cause urofacial syndrome. Alternative splicing results in multiple transcript variants.
Calculated Mw	119 kDa
PTM	Disulfide bond, Glycoprotein, Phosphoprotein
Cellular Localization	Cell membrane, Cytoplasm, Membrane

Images

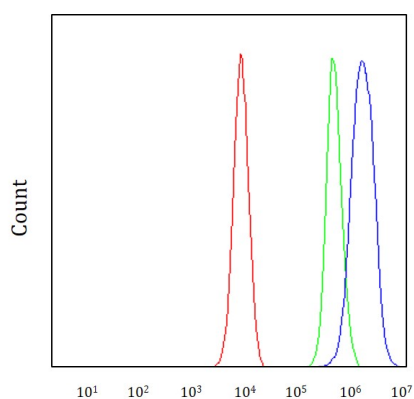
ARG44407 anti-LRIG2 antibody WB image

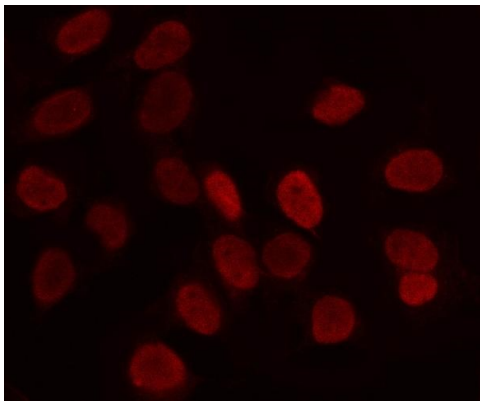
Western blot: K562 and HEL stained with ARG44407 anti-LRIG2 antibody at 0.5 µg/mL dilution.



ARG44407 anti-LRIG2 antibody FACS image

Flow Cytometry: K562 stained with ARG44407 anti-LRIG2 antibody at 1 µg/10⁶ cells dilution.





ARG44407 anti-LRIG2 antibody ICC/IF image

Immunofluorescence: HeLa stained with ARG44407 anti-LRIG2 antibody at 5 µg/mL dilution.