

ARG44411 anti-LRCH4 antibody

Package: 50 µg
Store at: -20°C

Summary

Product Description	Rabbit Polyclonal antibody recognizes LRCH4
Tested Reactivity	Hu, Ms
Tested Application	FACS, WB
Host	Rabbit
Clonality	Polyclonal
Isotype	IgG
Target Name	LRCH4
Species	Human
Immunogen	Human LRCH4 recombinant protein (aa. sequence: K256-R580).
Conjugation	Un-conjugated
Alternate Names	LRCH4; Leucine Rich Repeats And Calponin Homology Domain Containing 4; LRRN1; LRN; Leucine-Rich Repeat And Calponin Homology Domain-Containing Protein 4; Leucine-Rich Repeats And Calponin Homology (CH) Domain Containing 4; Leucine-Rich Neuronal Protein

Application Instructions

Application table	Application	Dilution
	FACS	1-3 µg/1x10 ⁶ cells
	WB	0.25-0.5 µg/ml
Application Note	The dilutions indicate recommended starting dilutions and the optimal dilutions or concentrations should be determined by the scientist.	

Properties

Form	Liquid
Purification	Affinity purified with Immunogen.
Buffer	0.9% NaCl, 0.2% Na ₂ HPO ₄ , 0.05% Sodium azide and 4% Trehalose.
Preservative	0.05% Sodium azide
Stabilizer	4% Trehalose
Concentration	0.5 mg/ml
Storage instruction	For continuous use, store undiluted antibody at 2-8°C for up to a week. For long-term storage, aliquot and store at -20°C or below. Storage in frost free freezers is not recommended. Avoid repeated freeze/thaw cycles. Suggest spin the vial prior to opening. The antibody solution should be gently mixed before use.
Note	For laboratory research only, not for drug, diagnostic or other use.

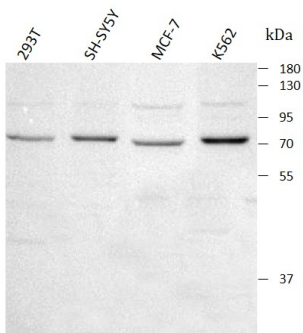
Bioinformation

Gene Symbol	LRCH4
Gene Full Name	Leucine Rich Repeats And Calponin Homology Domain Containing 4
Background	This gene encodes a protein that contains leucine-rich repeats (LRR) at its amino terminus and that is known to be involved in ligand binding. The carboxyl terminus may act as a membrane anchor. Identified structural elements suggest that the encoded protein resembles a receptor.
Function	Accessory protein that regulates signaling by multiple TLRs, acting as a broad-spanning regulator of the innate immune response. In macrophages, binds LPS and promotes proper docking of LPS in lipid raft membrane. May be required for lipid raft maintenance.
Calculated Mw	73 kDa
PTM	Phosphoprotein
Cellular Localization	Cell membrane, Membrane

Images

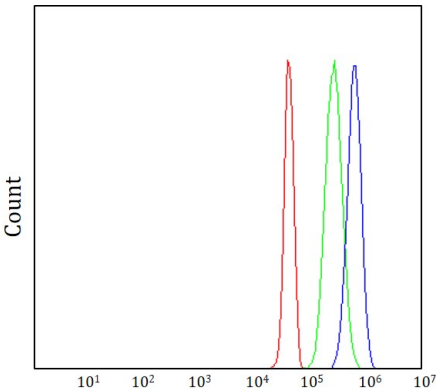
ARG44411 anti-LRCH4 antibody WB image

Western blot: 293T, SH-SY5Y, MCF-7 and K562 stained with ARG44411 anti-LRCH4 antibody at 0.5 µg/mL dilution.



ARG44411 anti-LRCH4 antibody FACS image

Flow Cytometry: JK stained with ARG44411 anti-LRCH4 antibody at 1 µg/10^6 cells dilution.



ARG44411 anti-LRCH4 antibody WB image

Western blot: RAW264.7 stained with ARG44411 anti-LRCH4 antibody at 0.5 µg/mL dilution.

