

**ARG44416**  
**anti-LRRC73 antibody**Package: 50 µg  
Store at: -20°C

### Summary

Product Description	Rabbit Polyclonal antibody recognizes LRRC73
Tested Reactivity	Hu
Tested Application	FACS, ICC/IF, WB
Host	Rabbit
Clonality	Polyclonal
Isotype	IgG
Target Name	LRRC73
Species	Human
Immunogen	Human LRRC73 recombinant protein (aa. sequence: M1-Q249).
Conjugation	Un-conjugated
Alternate Names	LRRC73; Leucine Rich Repeat Containing 73; C6orf154; Leucine-Rich Repeat-Containing Protein 73

### Application Instructions

Application table	Application	Dilution
	FACS	1-3 µg/1x10 <sup>6</sup> cells
	ICC/IF	5 µg/ml
	WB	0.25-0.5 µg/ml
Application Note	The dilutions indicate recommended starting dilutions and the optimal dilutions or concentrations should be determined by the scientist.	

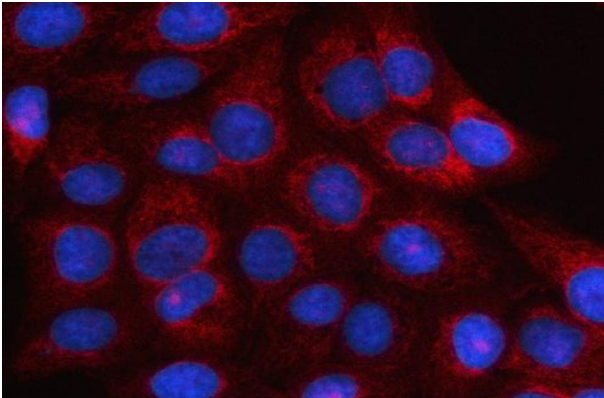
### Properties

Form	Liquid
Purification	Affinity purified with Immunogen.
Buffer	0.9% NaCl, 0.2% Na <sub>2</sub> HPO <sub>4</sub> , 0.05% Sodium azide and 4% Trehalose.
Preservative	0.05% Sodium azide
Stabilizer	4% Trehalose
Concentration	0.5 mg/ml
Storage instruction	For continuous use, store undiluted antibody at 2-8°C for up to a week. For long-term storage, aliquot and store at -20°C or below. Storage in frost free freezers is not recommended. Avoid repeated freeze/thaw cycles. Suggest spin the vial prior to opening. The antibody solution should be gently mixed before use.
Note	For laboratory research only, not for drug, diagnostic or other use.

Bioinformation

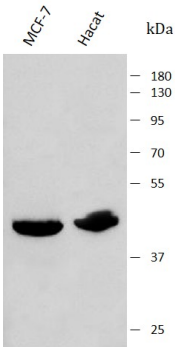
Gene Symbol	LRRC73
Gene Full Name	Leucine Rich Repeat Containing 73
Background	LRRC73 (Leucine Rich Repeat Containing 73) is a Protein Coding gene. Diseases associated with LRRC73 include Human Cytomegalovirus Infection.
Calculated Mw	33 kDa

Images



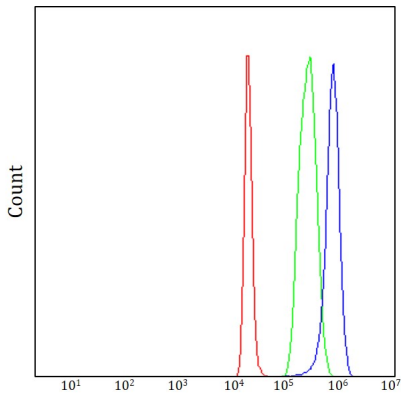
ARG44416 anti-LRRC73 antibody ICC/IF image

Immunofluorescence: U2OS stained with ARG44416 anti-LRRC73 antibody at 5 µg/mL dilution.



ARG44416 anti-LRRC73 antibody WB image

Western blot: MCF-7 and Hacat stained with ARG44416 anti-LRRC73 antibody at 0.5 µg/mL dilution.



ARG44416 anti-LRRC73 antibody FACS image

Flow Cytometry: 293T stained with ARG44416 anti-LRRC73 antibody at 1 µg/10<sup>6</sup> cells dilution.