

ARG44420 anti-LRRN4 antibody

Package: 50 µg
Store at: -20°C

Summary

Product Description	Rabbit Polyclonal antibody recognizes LRRN4
Tested Reactivity	Hu
Tested Application	FACS, ICC/IF, IHC-P, WB
Host	Rabbit
Clonality	Polyclonal
Isotype	IgG
Target Name	LRRN4
Species	Human
Immunogen	Human LRRN4 recombinant protein (aa. sequence: H125-R656).
Conjugation	Un-conjugated
Alternate Names	LRRN4; Leucine Rich Repeat Neuronal 4; DJ1056H1.1; C20orf75; NLRR4; Leucine-Rich Repeat Neuronal Protein 4; Neuronal Leucine-Rich Repeat Protein 4; NLRR-4; Chromosome 20 Open Reading Frame 75

Application Instructions

Application table	Application	Dilution
	FACS	1-3 µg/1x10 ⁶ cells
	ICC/IF	5 µg/ml
	IHC-P	1-3 µg/1x10 ⁶ cells
	WB	0.25-0.5 µg/ml
Application Note	The dilutions indicate recommended starting dilutions and the optimal dilutions or concentrations should be determined by the scientist.	

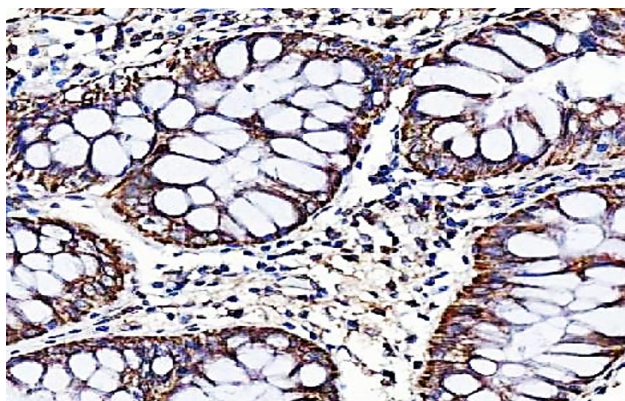
Properties

Form	Liquid
Purification	Affinity purified with Immunogen.
Buffer	0.9% NaCl, 0.2% Na ₂ HPO ₄ , 0.05% Sodium azide and 4% Trehalose.
Preservative	0.05% Sodium azide
Stabilizer	4% Trehalose
Concentration	0.5 mg/ml
Storage instruction	For continuous use, store undiluted antibody at 2-8°C for up to a week. For long-term storage, aliquot and store at -20°C or below. Storage in frost free freezers is not recommended. Avoid repeated freeze/thaw cycles. Suggest spin the vial prior to opening. The antibody solution should be gently mixed before use.

Bioinformation

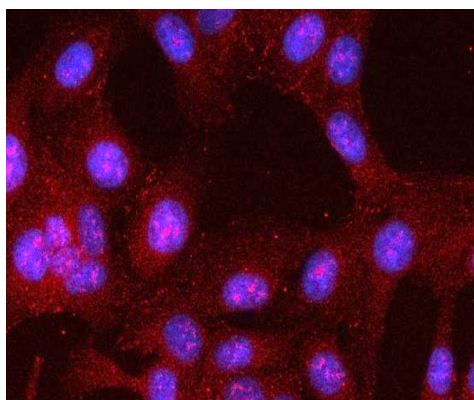
Gene Symbol	LRRN4
Gene Full Name	Leucine Rich Repeat Neuronal 4
Background	Predicted to be involved in long-term memory. Predicted to act upstream of or within visual learning. Located in extracellular exosome.
Function	May play an important role in hippocampus-dependent long-lasting memory.
Calculated Mw	79 kDa
PTM	Glycoprotein
Cellular Localization	Membrane

Images



ARG44420 anti-LRRN4 antibody IHC-P image

Immunohistochemistry: Human colorectal adenocarcinoma stained with ARG44420 anti-LRRN4 antibody at 2 µg/mL dilution.

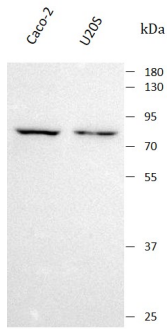


ARG44420 anti-LRRN4 antibody ICC/IF image

Immunofluorescence: U2OS stained with ARG44420 anti-LRRN4 antibody at 5 µg/mL dilution.

ARG44420 anti-LRRN4 antibody WB image

Western blot: Caco-2 and U20S stained with ARG44420 anti-LRRN4 antibody at 0.5 $\mu\text{g}/\text{mL}$ dilution.



ARG44420 anti-LRRN4 antibody FACS image

Flow Cytometry: U20S stained with ARG44420 anti-LRRN4 antibody at 1 $\mu\text{g}/10^6$ cells dilution.

