

## ARG44428 anti-PALM / Paralemmin antibody

Package: 50 µg  
Store at: -20°C

### Summary

Product Description	Rabbit Polyclonal antibody recognizes PALM / Paralemmin
Tested Reactivity	Hu, Ms, Rat
Tested Application	FACS, IHC-P, WB
Host	Rabbit
Clonality	Polyclonal
Isotype	IgG
Target Name	PALM / Paralemmin
Species	Human
Immunogen	Human PALM / Paralemmin recombinant protein (aa. sequence: Q162-L356).
Conjugation	Un-conjugated
Alternate Names	PALM ; Paralemmin; Paralemmin-1; KIAA0270; PALM1

### Application Instructions

Application table	Application	Dilution
	FACS	
	IHC-P	2-5 µg/ml
	WB	0.25-0.5 µg/ml
Application Note	The dilutions indicate recommended starting dilutions and the optimal dilutions or concentrations should be determined by the scientist.	

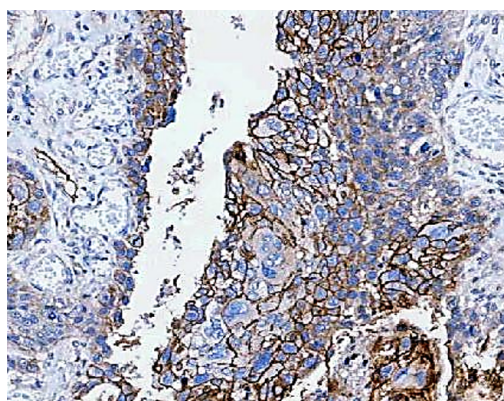
### Properties

Form	Liquid
Purification	Affinity purified with Immunogen.
Buffer	0.9% NaCl, 0.2% Na <sub>2</sub> HPO <sub>4</sub> , 0.05% Sodium azide and 4% Trehalose.
Preservative	0.05% Sodium azide
Stabilizer	4% Trehalose
Concentration	0.5 mg/ml
Storage instruction	For continuous use, store undiluted antibody at 2-8°C for up to a week. For long-term storage, aliquot and store at -20°C or below. Storage in frost free freezers is not recommended. Avoid repeated freeze/thaw cycles. Suggest spin the vial prior to opening. The antibody solution should be gently mixed before use.
Note	For laboratory research only, not for drug, diagnostic or other use.

## Bioinformation

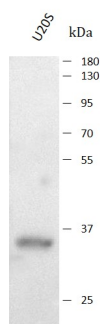
Gene Symbol	PALM
Gene Full Name	Paralemmin
Background	This gene encodes a member of the paralemmin protein family. The product of this gene is a prenylated and palmitoylated phosphoprotein that associates with the cytoplasmic face of plasma membranes and is implicated in plasma membrane dynamics in neurons and other cell types. Several alternatively spliced transcript variants have been identified, but the full-length nature of only two transcript variants has been determined.
Function	Involved in plasma membrane dynamics and cell process formation. Isoform 1 and isoform 2 are necessary for axonal and dendritic filopodia induction, for dendritic spine maturation and synapse formation in a palmitoylation-dependent manner.
Calculated Mw	42 kDa
PTM	Acetylation, Lipoprotein, Methylation, Palmitate, Phosphoprotein, Prenylation
Cellular Localization	Cell membrane, Cell projection, Membrane, Synapse

## Images



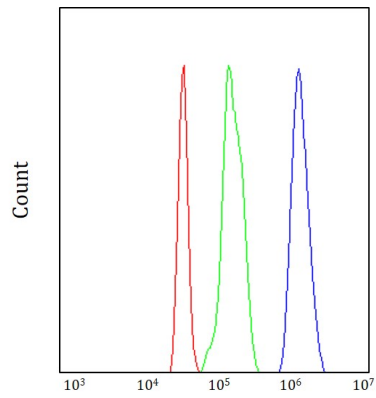
ARG44428 anti-PALM / Paralemmin antibody IHC-P image

Immunohistochemistry: Human esophageal squamous carcinoma stained with ARG44428 anti-PALM / Paralemmin antibody at 2  $\mu$ g/mL dilution.



ARG44428 anti-PALM / Paralemmin antibody WB image

Western blot: U2OS stained with ARG44428 anti-PALM / Paralemmin antibody at 0.5  $\mu$ g/mL dilution.



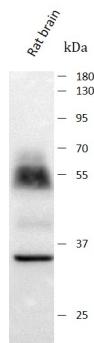
#### ARG44428 anti-PALM / Paralemmin antibody FACS image

Flow Cytometry: SH-SY5Y stained with ARG44428 anti-PALM / Paralemmin antibody at 1  $\mu\text{g}/10^6$  cells dilution.



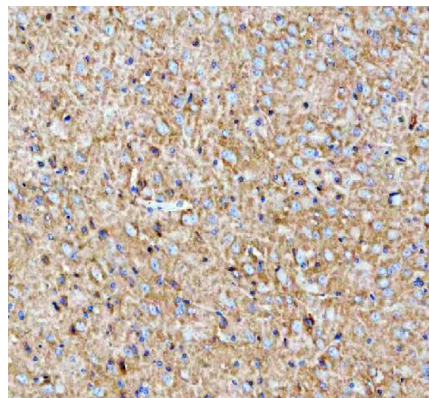
#### ARG44428 anti-PALM / Paralemmin antibody IHC-P image

Immunohistochemistry: Rat brain stained with ARG44428 anti-PALM / Paralemmin antibody at 2  $\mu\text{g}/\text{mL}$  dilution.



#### ARG44428 anti-PALM / Paralemmin antibody WB image

Western blot: Rat brain stained with ARG44428 anti-PALM / Paralemmin antibody at 0.5  $\mu\text{g}/\text{mL}$  dilution.



#### ARG44428 anti-PALM / Paralemmin antibody IHC-P image

Immunohistochemistry: Mouse brain stained with ARG44428 anti-PALM / Paralemmin antibody at 2  $\mu\text{g}/\text{mL}$  dilution.

ARG44428 anti-PALM / Paralemmin antibody WB image

Western blot: Mouse brain stained with ARG44428 anti-PALM / Paralemmin antibody at 0.5 µg/mL dilution.

