

## ARG44441 anti-ILDR1 antibody

Package: 50 µg  
Store at: -20°C

### Summary

Product Description	Rabbit Polyclonal antibody recognizes ILDR1
Tested Reactivity	Hu
Tested Application	FACS, WB
Host	Rabbit
Clonality	Polyclonal
Isotype	IgG
Target Name	ILDR1
Species	Human
Immunogen	Human ILDR1 recombinant protein
Conjugation	Un-conjugated
Alternate Names	ILDR1; Immunoglobulin Like Domain Containing Receptor 1; Angulin-2; Immunoglobulin-Like Domain-Containing Receptor 1; MGC50831; DFNB42; Immunoglobulin-Like Domain-Containing Receptor 1 Alpha; Immunoglobulin-Like Domain-Containing Receptor 1 Beta; Immunoglobulin-Like Domain Containing Receptor 1 ; Deafness, Autosomal Recessive 42

### Application Instructions

Application table	Application	Dilution
	FACS	1-3 µg/1x10 <sup>6</sup> cells
	WB	0.25-0.5 µg/ml
Application Note	The dilutions indicate recommended starting dilutions and the optimal dilutions or concentrations should be determined by the scientist.	

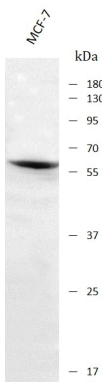
### Properties

Form	Liquid
Purification	Affinity purified with Immunogen.
Buffer	0.9% NaCl, 0.2% Na <sub>2</sub> HPO <sub>4</sub> , 0.05% Sodium azide and 4% Trehalose.
Preservative	0.05% Sodium azide
Stabilizer	4% Trehalose
Concentration	0.5 mg/ml
Storage instruction	For continuous use, store undiluted antibody at 2-8°C for up to a week. For long-term storage, aliquot and store at -20°C or below. Storage in frost free freezers is not recommended. Avoid repeated freeze/thaw cycles. Suggest spin the vial prior to opening. The antibody solution should be gently mixed before use.

Bioinformation

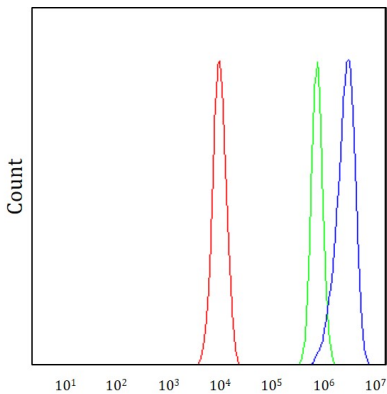
Gene Symbol	ILDR1
Gene Full Name	Immunoglobulin Like Domain Containing Receptor 1
Background	This gene encodes a protein that contains an immunoglobulin-like domain. The encoded protein may function as a multimeric receptor at the cell surface. The expression of this gene may be a diagnostic marker for cancer progression. Alternatively spliced transcript variants encoding multiple protein isoforms have been observed for this gene.
Function	Maintains epithelial barrier function by recruiting MARVELD2/tricellulin to tricellular tight junctions (tTJs).
Calculated Mw	63 kDa
PTM	Disulfide bond, Phosphoprotein
Cellular Localization	Cell junction, Cell membrane, Cytoplasm, Membrane, Tight junction

Images



ARG44441 anti-ILDR1 antibody WB image

Western blot: MCF-7 stained with ARG44441 anti-ILDR1 antibody at 0.5 µg/mL dilution.



ARG44441 anti-ILDR1 antibody FACS image

Flow Cytometry: PC-3 stained with ARG44441 anti-ILDR1 antibody at 1 µg/10<sup>6</sup> cells dilution.