

ARG44444 anti-IMP2 antibody

Package: 50 µg
Store at: -20°C

Summary

Product Description	Rabbit Polyclonal antibody recognizes IMP2
Tested Reactivity	Hu, Ms, Rat
Tested Application	IHC-P, WB
Host	Rabbit
Clonality	Polyclonal
Isotype	IgG
Target Name	IMP2
Species	Human
Immunogen	Human IMP2 recombinant protein
Conjugation	Un-conjugated
Alternate Names	IMP2; Interphotoreceptor Matrix Proteoglycan 2; IPM200; SPACRCAN; RP56; Sialoprotein Associated With Cones And Rods Proteoglycan; Interphotoreceptor Matrix Proteoglycan Of 200 KDa; IPM 200; Interphotoreceptor Matrix Proteoglycan IPM 200; Spacrcan; VMD5

Application Instructions

Application table	Application	Dilution
	IHC-P	2-5 µg/ml
	WB	0.25-0.5 µg/ml
Application Note	The dilutions indicate recommended starting dilutions and the optimal dilutions or concentrations should be determined by the scientist.	

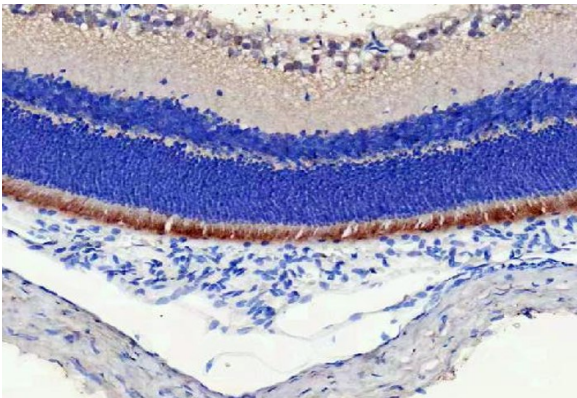
Properties

Form	Liquid
Purification	Affinity purified with Immunogen.
Buffer	0.9% NaCl, 0.2% Na ₂ HPO ₄ , 0.05% Sodium azide and 4% Trehalose.
Preservative	0.05% Sodium azide
Stabilizer	4% Trehalose
Concentration	0.5 mg/ml
Storage instruction	For continuous use, store undiluted antibody at 2-8°C for up to a week. For long-term storage, aliquot and store at -20°C or below. Storage in frost free freezers is not recommended. Avoid repeated freeze/thaw cycles. Suggest spin the vial prior to opening. The antibody solution should be gently mixed before use.
Note	For laboratory research only, not for drug, diagnostic or other use.

Bioinformation

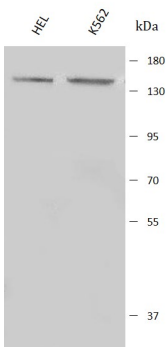
Gene Symbol	IMPG2
Gene Full Name	Interphotoreceptor Matrix Proteoglycan 2
Background	The protein encoded by this gene binds chondroitin sulfate and hyaluronan and is a proteoglycan. The encoded protein plays a role in the organization of the interphotoreceptor matrix and may promote the growth and maintenance of the light-sensitive photoreceptor outer segment. Defects in this gene are a cause of retinitis pigmentosa type 56 and maculopathy, IMPG2-related.
Function	Chondroitin sulfate- and hyaluronan-binding proteoglycan involved in the organization of interphotoreceptor matrix; may participate in the maturation and maintenance of the light-sensitive photoreceptor outer segment. Binds heparin.
Calculated Mw	139 kDa
PTM	Disulfide bond, Glycoprotein
Cellular Localization	Cell projection, Extracellular matrix, Membrane, Secreted

Images



ARG44444 anti-IMPG2 antibody IHC-P image

Immunohistochemistry: Rat retina stained with ARG44444 anti-IMPG2 antibody at 2 µg/mL dilution.

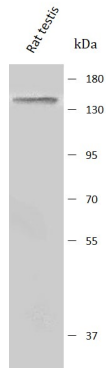


ARG44444 anti-IMPG2 antibody WB image

Western blot: HEL and K562 stained with ARG44444 anti-IMPG2 antibody at 0.5 µg/mL dilution.

ARG44444 anti-IMP2 antibody WB image

Western blot: Rat testis stained with ARG44444 anti-IMP2 antibody at 0.5 $\mu\text{g}/\text{mL}$ dilution.



ARG44444 anti-IMP2 antibody WB image

Western blot: NIH/3T3 stained with ARG44444 anti-IMP2 antibody at 0.5 $\mu\text{g}/\text{mL}$ dilution.

