

ARG44445 anti-RTCA antibody

Package: 50 µg
Store at: -20°C

Summary

Product Description	Rabbit Polyclonal antibody recognizes RTCA
Tested Reactivity	Hu, Ms, Rat
Tested Application	WB
Host	Rabbit
Clonality	Polyclonal
Isotype	IgG
Target Name	RTCA
Species	Human
Immunogen	Human RTCA recombinant protein
Conjugation	Un-conjugated
Alternate Names	RTCA; RNA 3'-Terminal Phosphate Cyclase; RTC1; RPC; RTCD1; RNA Terminal Phosphate Cyclase Domain-Containing Protein 1; RNA Terminal Phosphate Cyclase Domain 1; RTC Domain-Containing Protein 1

Application Instructions

Application table	Application	Dilution
	WB	0.25-0.5 µg/ml
Application Note	The dilutions indicate recommended starting dilutions and the optimal dilutions or concentrations should be determined by the scientist.	

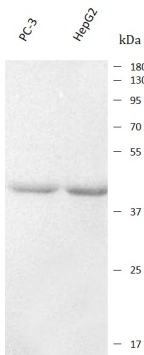
Properties

Form	Liquid
Purification	Affinity purified with Immunogen.
Buffer	0.9% NaCl, 0.2% Na ₂ HPO ₄ , 0.05% Sodium azide and 4% Trehalose.
Preservative	0.05% Sodium azide
Stabilizer	4% Trehalose
Concentration	0.5 mg/ml
Storage instruction	For continuous use, store undiluted antibody at 2-8°C for up to a week. For long-term storage, aliquot and store at -20°C or below. Storage in frost free freezers is not recommended. Avoid repeated freeze/thaw cycles. Suggest spin the vial prior to opening. The antibody solution should be gently mixed before use.
Note	For laboratory research only, not for drug, diagnostic or other use.

Gene Symbol	RTCA
Gene Full Name	RNA 3'-Terminal Phosphate Cyclase
Background	This gene encodes a member of the RNA 3'-phosphate cyclase family. The encoded protein plays a role in RNA metabolism by catalyzing the ATP-dependent conversion of the 3'-phosphate of RNA substrates to a 2',3'-cyclic phosphodiester. Alternatively spliced transcript variants encoding multiple isoforms have been observed for this gene.
Function	Catalyzes the conversion of 3'-phosphate to a 2',3'-cyclic phosphodiester at the end of RNA.
Calculated Mw	39 kDa
Cellular Localization	Nucleus

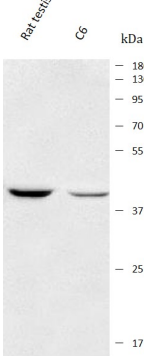
Images

ARG44445 anti-RTCA antibody WB image



Western blot: PC-3 and HepG2 stained with ARG44445 anti-RTCA antibody at 0.5 µg/mL dilution.

ARG44445 anti-RTCA antibody WB image



Western blot: Rat testis and C6 stained with ARG44445 anti-RTCA antibody at 0.5 µg/mL dilution.

ARG44445 anti-RTCA antibody WB image



Western blot: NIH/3T3 stained with ARG44445 anti-RTCA antibody at 0.5 µg/mL dilution.