

ARG44461 anti-PCDHGC3 antibody

Package: 50 µg
Store at: -20°C

Summary

| | |
|---------------------|--|
| Product Description | Rabbit Polyclonal antibody recognizes PCDHGC3 |
| Tested Reactivity | Hu, Rat |
| Tested Application | FACS, WB |
| Host | Rabbit |
| Clonality | Polyclonal |
| Isotype | IgG |
| Target Name | PCDHGC3 |
| Species | Human |
| Immunogen | Human PCDHGC3 recombinant protein |
| Conjugation | Un-conjugated |
| Alternate Names | PCDHGC3; Protocadherin Gamma Subfamily C, 3; PCDH-GAMMA-C3; PC-43; PCDH2; PC43; Protocadherin Gamma-C3; Protocadherin 43; Cadherin-Like 2; Protocadherin-2; Protocadherin-43; Protocadherin 2; PCDH-Gamma-C3 |

Application Instructions

| Application table | Application | Dilution |
|-------------------|--|--------------------------|
| | FACS | 1-3 µg/1x10 ⁶ |
| | WB | 0.25-0.5 µg/ml |
| Application Note | The dilutions indicate recommended starting dilutions and the optimal dilutions or concentrations should be determined by the scientist. | |

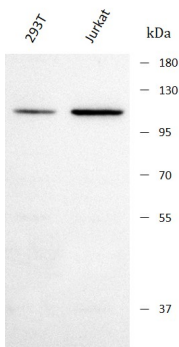
Properties

| | |
|---------------------|--|
| Form | Liquid |
| Purification | Affinity purified with Immunogen. |
| Buffer | 0.9% NaCl, 0.2% Na ₂ HPO ₄ , 0.05% Sodium azide and 4% Trehalose. |
| Preservative | 0.05% Sodium azide |
| Stabilizer | 4% Trehalose |
| Concentration | 0.5 mg/ml |
| Storage instruction | For continuous use, store undiluted antibody at 2-8°C for up to a week. For long-term storage, aliquot and store at -20°C or below. Storage in frost free freezers is not recommended. Avoid repeated freeze/thaw cycles. Suggest spin the vial prior to opening. The antibody solution should be gently mixed before use. |
| Note | For laboratory research only, not for drug, diagnostic or other use. |

| | |
|-----------------------|--|
| Gene Symbol | PCDHGC3 |
| Gene Full Name | Protocadherin Gamma Subfamily C, 3 |
| Background | <p>This gene is a member of the protocadherin gamma gene cluster, one of three related clusters tandemly linked on chromosome five. These gene clusters have an immunoglobulin-like organization, suggesting that a novel mechanism may be involved in their regulation and expression. The gamma gene cluster includes 22 genes divided into 3 subfamilies. Subfamily A contains 12 genes, subfamily B contains 7 genes and 2 pseudogenes, and the more distantly related subfamily C contains 3 genes. The tandem array of 22 large, variable region exons are followed by a constant region, containing 3 exons shared by all genes in the cluster. Each variable region exon encodes the extracellular region, which includes 6 cadherin ectodomains and a transmembrane region. The constant region exons encode the common cytoplasmic region. These neural cadherin-like cell adhesion proteins most likely play a critical role in the establishment and function of specific cell-cell connections in the brain. Alternative splicing has been described for the gamma cluster genes.</p> |
| Function | Potential calcium-dependent cell-adhesion protein. May be involved in the establishment and maintenance of specific neuronal connections in the brain. |
| Calculated Mw | 101 kDa |
| PTM | Glycoprotein |
| Cellular Localization | Cell membrane, Membrane |

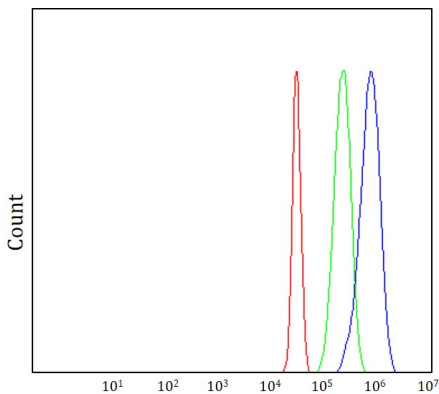
Images

ARG44461 anti-PCDHGC3 antibody WB image



Western blot: 293T and Jurkat stained with ARG44461 anti-PCDHGC3 antibody at 0.5 µg/mL dilution.

ARG44461 anti-PCDHGC3 antibody FACS image



Flow Cytometry: JK stained with ARG44461 anti-PCDHGC3 antibody at 1 µg/10⁶ cells dilution.

ARG44461 anti-PCDHGC3 antibody WB image

Western blot: C6 stained with ARG44461 anti-PCDHGC3 antibody at 0.5 µg/mL dilution.

