

ARG44468 anti-PI4K2B antibody

Package: 50 µg
Store at: -20°C

Summary

Product Description	Rabbit Polyclonal antibody recognizes PI4K2B
Tested Reactivity	Hu, Rat
Tested Application	FACS, ICC/IF, WB
Host	Rabbit
Clonality	Polyclonal
Isotype	IgG
Target Name	PI4K2B
Species	Human
Immunogen	Human PI4K2B recombinant protein
Conjugation	Un-conjugated
Alternate Names	PI4K2B; Phosphatidylinositol 4-Kinase Type 2 Beta; PI4KIIB; PIK42B; Phosphatidylinositol 4-Kinase Type 2-Beta; PI4KII-BETA

Application Instructions

Application table	Application	Dilution
	FACS	1-3 µg/1x10 ⁶
	ICC/IF	5 µg/ml
	WB	0.25-0.5 µg/ml
Application Note	The dilutions indicate recommended starting dilutions and the optimal dilutions or concentrations should be determined by the scientist.	

Properties

Form	Liquid
Purification	Affinity purified with Immunogen.
Buffer	0.9% NaCl, 0.2% Na ₂ HPO ₄ , 0.05% Sodium azide and 4% Trehalose.
Preservative	0.05% Sodium azide
Stabilizer	4% Trehalose
Concentration	0.5 mg/ml
Storage instruction	For continuous use, store undiluted antibody at 2-8°C for up to a week. For long-term storage, aliquot and store at -20°C or below. Storage in frost free freezers is not recommended. Avoid repeated freeze/thaw cycles. Suggest spin the vial prior to opening. The antibody solution should be gently mixed before use.

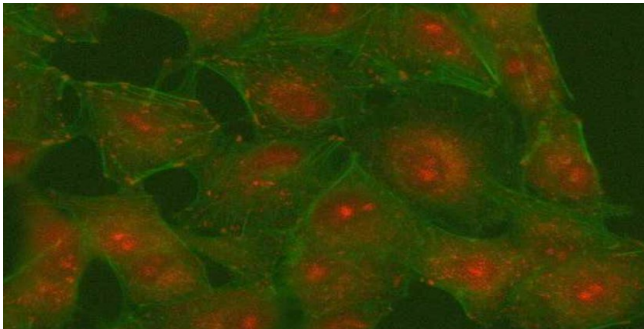
Note

For laboratory research only, not for drug, diagnostic or other use.

Bioinformation

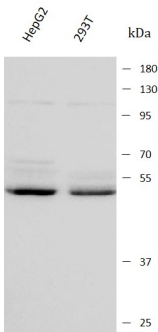
Gene Symbol	PI4K2B
Gene Full Name	Phosphatidylinositol 4-Kinase Type 2 Beta
Background	This gene encodes a member of the type II PI4 kinase protein family. The encoded protein is primarily cytosolic and contributes to overall PI4-kinase activity along with other protein family members. This protein is involved in early T cell activation.
Function	Together with PI4K2A and the type III PI4Ks (PIK4CA and PIK4CB) it contributes to the overall PI4-kinase activity of the cell.
Calculated Mw	55 kDa
PTM	Phosphoprotein
Cellular Localization	Cell membrane, Cytoplasm, Endoplasmic reticulum, Endosome, Golgi apparatus, Membrane

Images



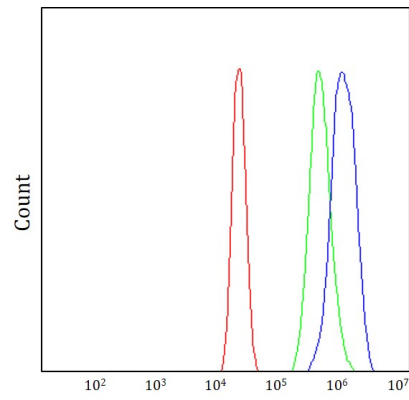
ARG44468 anti-PI4K2B antibody ICC/IF image

Immunofluorescence: A549 stained with ARG44468 anti-PI4K2B antibody at 5 µg/mL dilution.



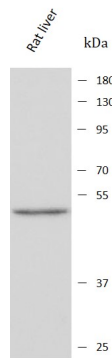
ARG44468 anti-PI4K2B antibody WB image

Western blot: HepG2 and 293T stained with ARG44468 anti-PI4K2B antibody at 0.5 µg/mL dilution.



ARG44468 anti-PI4K2B antibody FACS image

Flow Cytometry: MCF-7 stained with ARG44468 anti-PI4K2B antibody at $1\text{ }\mu\text{g}/10^6$ cells dilution.



ARG44468 anti-PI4K2B antibody WB image

Western blot: Rat liver stained with ARG44468 anti-PI4K2B antibody at $0.5\text{ }\mu\text{g}/\text{mL}$ dilution.