

## ARG44469 anti-PI4 kinase beta / PI4KB antibody

Package: 50 µg  
Store at: -20°C

### Summary

Product Description	Rabbit Polyclonal antibody recognizes PI4 kinase beta / PI4KB
Tested Reactivity	Hu, Ms, Rat
Tested Application	FACS, IHC-P, WB
Host	Rabbit
Clonality	Polyclonal
Isotype	IgG
Target Name	PI4 kinase beta / PI4KB
Species	Human
Immunogen	Human PI4 kinase beta / PI4KB recombinant protein
Conjugation	Un-conjugated
Alternate Names	PI4KB; Phosphatidylinositol 4-Kinase Beta; PI4K-BETA; Pi4K92; PIK4CB; Phosphatidylinositol 4-Kinase, Catalytic, Beta; PtdIns 4-Kinase Beta; EC 2.7.1.67; PI4KIII; NPIK; Phosphatidylinositol 4-Kinase, Wortmannin-Sensitive; Type III Phosphatidylinositol 4-Kinase Beta; PI4KIIIBETA; PI4K-Beta

### Application Instructions

Application table	Application	Dilution
	FACS	1-3 µg/1x10 <sup>6</sup>
	IHC-P	2-5 µg/ml
	WB	0.25-0.5 µg/ml
Application Note	The dilutions indicate recommended starting dilutions and the optimal dilutions or concentrations should be determined by the scientist.	

### Properties

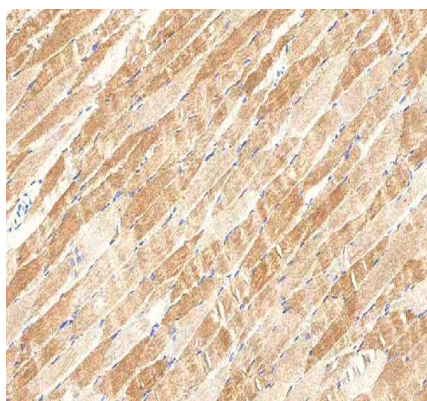
Form	Liquid
Purification	Affinity purified with Immunogen.
Buffer	0.9% NaCl, 0.2% Na <sub>2</sub> HPO <sub>4</sub> , 0.05% Sodium azide and 4% Trehalose.
Preservative	0.05% Sodium azide
Stabilizer	4% Trehalose
Concentration	0.5 mg/ml
Storage instruction	For continuous use, store undiluted antibody at 2-8°C for up to a week. For long-term storage, aliquot and store at -20°C or below. Storage in frost free freezers is not recommended. Avoid repeated freeze/thaw cycles. Suggest spin the vial prior to opening. The antibody solution should be gently mixed before use.

Note For laboratory research only, not for drug, diagnostic or other use.

## Bioinformation

Gene Symbol	PI4KB
Gene Full Name	Phosphatidylinositol 4-Kinase Beta
Function	Enables 1-phosphatidylinositol 4-kinase activity and 14-3-3 protein binding activity. Predicted to be involved in phosphatidylinositol phosphate biosynthetic process and phosphatidylinositol-mediated signaling. Located in Golgi membrane.
Highlight	Phosphorylates phosphatidylinositol (PI) in the first committed step in the production of the second messenger inositol-1,4,5,-trisphosphate (PIP). May regulate Golgi disintegration/reorganization during mitosis, possibly via its phosphorylation. Involved in Golgi-to-plasma membrane trafficking.
Calculated Mw	91 kDa
PTM	Acetylation, Phosphoprotein
Cellular Localization	Cytoplasm, Endoplasmic reticulum, Golgi apparatus, Membrane, Mitochondrion, Mitochondrion outer membrane

## Images



ARG44469 anti-PI4 kinase beta / PI4KB antibody IHC-P image

Immunohistochemistry: Human skeletal muscle stained with ARG44469 anti-PI4 kinase beta / PI4KB antibody at 2 µg/mL dilution.