

ARG44533 anti-LACTB antibody

Package: 50 µg
Store at: -20°C

Summary

Product Description	Rabbit Polyclonal antibody recognizes LACTB
Tested Reactivity	Hu
Tested Application	FACS, ICC/IF, IHC-P, WB
Host	Rabbit
Clonality	Polyclonal
Isotype	IgG
Target Name	LACTB
Species	Human
Immunogen	Human LACTB recombinant protein.
Conjugation	Un-conjugated
Alternate Names	LACTB; Lactamase Beta; MRPL56; Serine Beta-Lactamase-Like Protein LACTB, Mitochondrial; Serine Beta-Lactamase-Like Protein, Mitochondrial; FLJ14902; Mitochondrial 39S Ribosomal Protein L56; Mitochondrial Ribosomal Protein L56; EC 3.4.-.- ; G24

Application Instructions

Application table	Application	Dilution
	FACS	1-3 µg/10 ⁶ cells
	ICC/IF	5 µg/ml
	IHC-P	2-5 µg/ml
	WB	0.25-0.5 µg/ml
Application Note	* The dilutions indicate recommended starting dilutions and the optimal dilutions or concentrations should be determined by the scientist.	

Properties

Form	Liquid
Purification	Affinity purification with immunogen.
Buffer	0.9% NaCl, 0.2% Na ₂ HPO ₄ , 0.05% Sodium azide and 4% Trehalose.
Preservative	0.05% Sodium azide
Stabilizer	4% Trehalose
Concentration	0.5 mg/ml
Storage instruction	For continuous use, store undiluted antibody at 2-8°C for up to a week. For long-term storage, aliquot and store at -20°C or below. Storage in frost free freezers is not recommended. Avoid repeated freeze/thaw cycles. Suggest spin the vial prior to opening. The antibody solution should be gently mixed

before use.

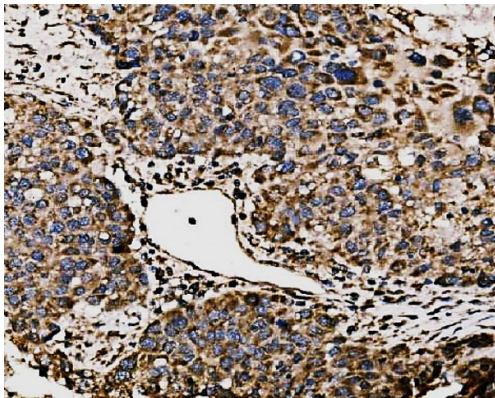
Note

For laboratory research only, not for drug, diagnostic or other use.

Bioinformation

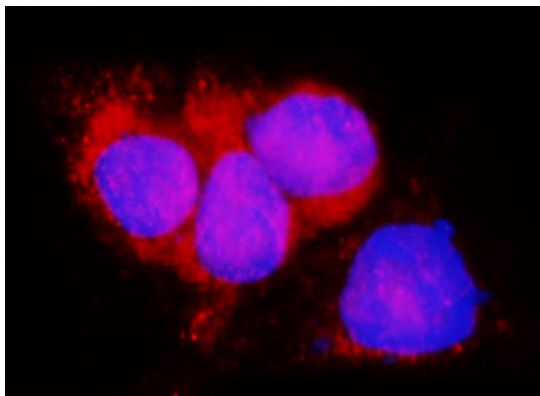
Gene Symbol	LACTB
Gene Full Name	Lactamase Beta
Background	This gene encodes a mitochondrially-localized protein that has sequence similarity to prokaryotic beta-lactamases. Many of the residues responsible for beta-lactamase activity are not conserved in this protein, suggesting it may have a different enzymatic function. Increased expression of the related mouse gene was found to be associated with obesity. Alternative splicing results in multiple transcript variants encoding different protein isoform
Function	Mitochondrial serine protease that acts as a regulator of mitochondrial lipid metabolism.
Calculated Mw	61 kDa
PTM	Acetylation
Cellular Localization	Mitochondrion

Images



ARG44533 anti-LACTB antibody IHC-P image

Immunohistochemistry: Human liver cancer stained with ARG44533 anti-LACTB antibody at 2 µg/ml dilution.

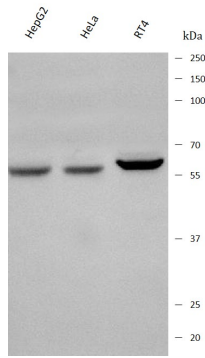


ARG44533 anti-LACTB antibody ICC/IF image

Immunofluorescence: A431 stained with ARG44533 anti-LACTB antibody at 5 µg/ml dilution.

ARG44533 anti-LACTB antibody WB image

Western blot: HepG2, HeLa and RT4 stained with ARG44533 anti-LACTB antibody at 0.5 $\mu\text{g}/\text{mL}$ dilution.



ARG44533 anti-LACTB antibody FACS image

Flow Cytometry: Caco-2 stained with ARG44533 anti-LACTB antibody at 1 $\mu\text{g}/10^6$ cells dilution.

