

## ARG44554 anti-SLCO2B1 antibody

Package: 50 µl  
Store at: -20°C

### Summary

Product Description	Rabbit Polyclonal antibody recognizes SLCO2B1.
Tested Reactivity	Ms, Rat
Predict Reactivity	Hu, Bov, Dog, Hrs
Tested Application	IHC-Fr, IHC-P, WB
Host	Rabbit
Clonality	Polyclonal
Isotype	IgG
Target Name	SLCO2B1
Species	Human
Conjugation	Un-conjugated
Alternate Names	SLCO2B1; Solute Carrier Organic Anion Transporter Family Member 2B1; OATP2B1; OATP-B; SLC21A9; Solute Carrier Family 21 (Organic Anion Transporter), Member 9; Organic Anion Transporter Polypeptide-Related Protein 2; Organic Anion Transporting Polypeptide 2B1; Organic Anion Transporter B; OATP-RP2; OATPB; Solute Carrier Organic Anion Transporter Family, Member 2B1; Solute Carrier Family 21 Member 9; KIAA0880; OATPRP2

### Application Instructions

Application table	Application	Dilution
	IHC-Fr	1:100-1:500
	IHC-P	1:100-1:500
	WB	1:100-1:2000
Application Note	* The dilutions indicate recommended starting dilutions and the optimal dilutions or concentrations should be determined by the scientist.	
Observed Size	87 kDa	

### Properties

Form	Liquid
Purification	Purification with Protein A.
Buffer	TBS with 50% Glycerol and 1% BSA.
Stabilizer	50% Glycerol and 1% BSA.
Concentration	1 mg/ml
Storage instruction	For continuous use, store undiluted antibody at 2-8°C for up to a week. For long-term storage, aliquot and store at -20°C or below. Storage in frost free freezers is not recommended. Avoid repeated

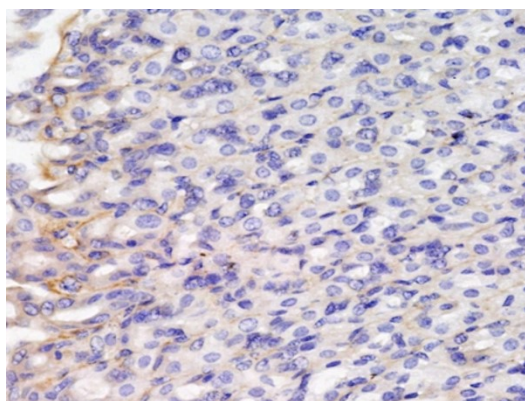
freeze/thaw cycles. Suggest spin the vial prior to opening. The antibody solution should be gently mixed before use.

**Note** For laboratory research only, not for drug, diagnostic or other use.

## Bioinformation

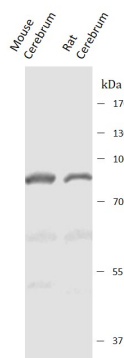
Gene Symbol	SLCO2B1
Gene Full Name	Solute Carrier Organic Anion Transporter Family Member 2B1
Background	This locus encodes a member of the organic anion-transporting polypeptide family of membrane proteins. The protein encoded by this locus may function in regulation of placental uptake of sulfated steroids. Alternatively spliced transcript variants have been described.
Function	Mediates the Na <sup>+</sup> -independent transport of steroid sulfate conjugates and other specific organic anions.
Calculated Mw	77 kDa
PTM	Disulfide bond, Glycoprotein, Phosphoprotein
Cellular Localization	Cell membrane, Membrane

## Images



ARG44554 anti-SLCO2B1 antibody IHC-P image

Immunohistochemistry: Mouse small intestine stained with ARG44554 anti-SLCO2B1 antibody.



ARG44554 anti-SLCO2B1 antibody WB image

Western blot: Mouse Cerebrum and Rat Cerebrum stained with ARG44554 anti-SLCO2B1 antibody at 1:1000 dilution.