

ARG44625 anti-ARHGEF1 antibody

Package: 50 µg
Store at: -20°C

Summary

Product Description	Mouse Monoclonal antibody recognizes ARHGEF1
Tested Reactivity	Hu
Tested Application	IHC-P, IP
Host	Mouse
Clonality	Monoclonal
Isotype	IgG2b
Target Name	ARHGEF1
Species	Human
Conjugation	Un-conjugated
Alternate Names	ARHGEF1; Rho Guanine Nucleotide Exchange Factor 1; P115-RHOGEF; SUB1.5; LBCL2; Rho Guanine Nucleotide Exchange Factor (GEF) 1; 115 KDa Guanine Nucleotide Exchange Factor; P115RhoGEF; 115-KD Protein; Lsc Homolog; P115-RhoGEF; Sub1.5; IMD62; GEF1; LSC

Application Instructions

Application table	Application	Dilution
	IHC-P	5 µg/mL
	IP	10 µg/mL
Application Note	* The dilutions indicate recommended starting dilutions and the optimal dilutions or concentrations should be determined by the scientist.	

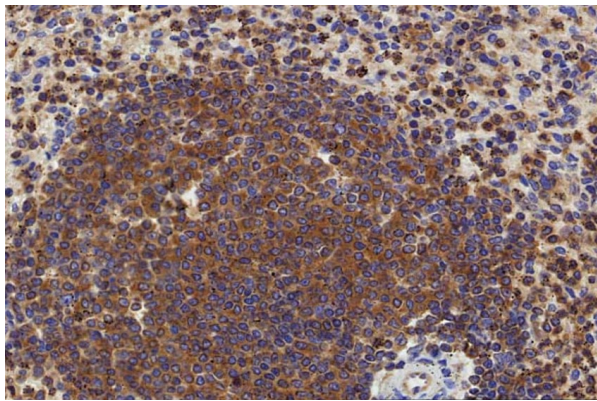
Properties

Form	Liquid
Purification	Protein A purification
Buffer	PBS with 0.09% sodium azide
Preservative	0.09% sodium azide
Storage instruction	For continuous use, store undiluted antibody at 2-8°C for up to a week. For long-term storage, aliquot and store at -20°C or below. Storage in frost free freezers is not recommended. Avoid repeated freeze/thaw cycles. Suggest spin the vial prior to opening. The antibody solution should be gently mixed before use.
Note	For laboratory research only, not for drug, diagnostic or other use.

Bioinformation

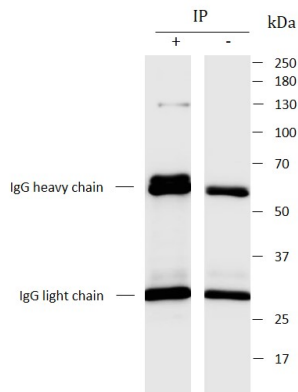
Gene Symbol	ARHGEF1
Gene Full Name	Rho Guanine Nucleotide Exchange Factor 1
Background	Rho GTPases play a fundamental role in numerous cellular processes that are initiated by extracellular stimuli that work through G protein coupled receptors. The encoded protein may form complex with G proteins and stimulate Rho-dependent signals. Multiple alternatively spliced transcript variants have been found for this gene, but the full-length nature of some variants has not been defined. [provided by RefSeq, Jul 2008]
Function	Mediates angiotensin-2-induced RhoA activation. [UniProt]
Calculated Mw	102 kDa
PTM	Phosphoprotein. [UniProt]
Cellular Localization	Cytoplasm, Membrane. [UniProt]

Images



ARG44625 anti-ARHGEF1 antibody IHC-P image

Immunohistochemistry: Human spleen stained with ARG44625 anti-ARHGEF1 antibody at 5 µg/mL dilution.



ARG44625 anti-ARHGEF1 antibody IP image

Immunoprecipitation: HEK-293 lysate immunoprecipitated with 2.5 µg of ARG44625 anti-ARHGEF1 antibody.