

ARG44627 anti-ASRGL1 / ALP antibody

Package: 50 µg
Store at: -20°C

Summary

Product Description	Mouse Monoclonal antibody recognizes ASRGL1 / ALP
Tested Reactivity	Hu
Tested Application	IP
Host	Mouse
Clonality	Monoclonal
Isotype	IgG2b
Target Name	ASRGL1 / ALP
Species	Human
Conjugation	Un-conjugated
Alternate Names	ASRGL1; Asparaginase And Isoaspartyl Peptidase 1; ALP; ALP1; Isoaspartyl Peptidase/L-Asparaginase; Asparaginase-Like 1 Protein; L-Asparagine Amidohydrolase; Asparaginase-Like Protein 1; Beta-Aspartyl-Peptidase; Isoaspartyl Dipeptidase; Asparaginase Like 1; EC 3.5.1.1; FLJ22316; CRASH; Testis Secretory Sperm-Binding Protein Li 242mP; L-Asparaginase; EC 3.4.19.5

Application Instructions

Application table	Application	Dilution
	IP	10 µg/mL
Application Note	* The dilutions indicate recommended starting dilutions and the optimal dilutions or concentrations should be determined by the scientist.	

Properties

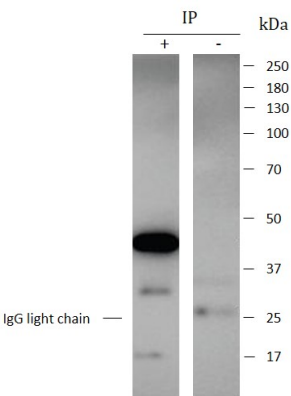
Form	Liquid
Purification	Protein A purification
Buffer	PBS with 0.09% sodium azide
Preservative	0.09% sodium azide
Storage instruction	For continuous use, store undiluted antibody at 2-8°C for up to a week. For long-term storage, aliquot and store at -20°C or below. Storage in frost free freezers is not recommended. Avoid repeated freeze/thaw cycles. Suggest spin the vial prior to opening. The antibody solution should be gently mixed before use.
Note	For laboratory research only, not for drug, diagnostic or other use.

Bioinformation

Gene Symbol	ASRGL1
-------------	--------

Gene Full Name	Asparaginase And Isoaspartyl Peptidase 1
Background	Enables asparaginase activity and beta-aspartyl-peptidase activity. Involved in asparagine catabolic process via L-aspartate. Located in cytoplasm. [provided by Alliance of Genome Resources, Apr 2022]
Function	Has both L-asparaginase and beta-aspartyl peptidase activity. May be involved in the production of L-aspartate, which can act as an excitatory neurotransmitter in some brain regions. Is highly active with L-Asp beta-methyl ester. Besides, has catalytic activity toward beta-aspartyl dipeptides and their methyl esters, including beta-L-Asp-L-Phe, beta-L-Asp-L-Phe methyl ester (aspartame), beta-L-Asp-L-Ala, beta-L-Asp-L-Leu and beta-L-Asp-L-Lys. Does not have aspartylglucosaminidase activity and is inactive toward GlcNAc-L-Asn. Likewise, has no activity toward glutamine. [UniProt]
PTM	Acetylation, Autocatalytic cleavage. [UniProt]
Cellular Localization	Cytoplasm. [UniProt]

Images



ARG44627 anti-ASRGL1 / ALP antibody IP image

Immunoprecipitation: HepG2 lysate immunoprecipitated with 2.5 µg of ARG44627 anti-ASRGL1 / ALP antibody.