

## ARG44628 anti-BASP1 antibody

Package: 50 µg  
Store at: -20°C

### Summary

Product Description	Mouse Monoclonal antibody recognizes BASP1
Tested Reactivity	Hu
Tested Application	IP
Host	Mouse
Clonality	Monoclonal
Isotype	IgG2a
Target Name	BASP1
Species	Human
Conjugation	Un-conjugated
Alternate Names	BASP1; Brain Abundant Membrane Attached Signal Protein 1; NAP22; NAP-22; CAP-23; CAP23; 22 KDa Neuronal Tissue-Enriched Acidic Protein; Neuronal Axonal Membrane Protein NAP-22; Brain Acid Soluble Protein 1; Brain Abundant, Membrane Attached Signal Protein 1; Neuronal Tissue-Enriched Acidic Protein; Brain Acid-Soluble Protein 1

### Application Instructions

Application table	Application	Dilution
	IP	10 µg/mL
Application Note	* The dilutions indicate recommended starting dilutions and the optimal dilutions or concentrations should be determined by the scientist.	

### Properties

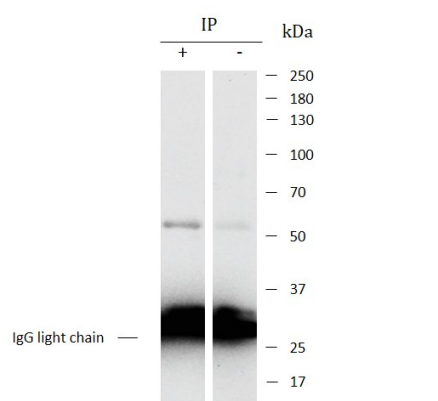
Form	Liquid
Purification	Protein A purification
Buffer	PBS with 0.09% sodium azide
Preservative	0.09% sodium azide
Storage instruction	For continuous use, store undiluted antibody at 2-8°C for up to a week. For long-term storage, aliquot and store at -20°C or below. Storage in frost free freezers is not recommended. Avoid repeated freeze/thaw cycles. Suggest spin the vial prior to opening. The antibody solution should be gently mixed before use.
Note	For laboratory research only, not for drug, diagnostic or other use.

### Bioinformation

Gene Symbol	BASP1
-------------	-------

Gene Full Name	Brain Abundant Membrane Attached Signal Protein 1
Background	This gene encodes a membrane bound protein with several transient phosphorylation sites and PEST motifs. Conservation of proteins with PEST sequences among different species supports their functional significance. PEST sequences typically occur in proteins with high turnover rates. Immunological characteristics of this protein are species specific. This protein also undergoes N-terminal myristoylation. Alternative splicing results in multiple transcript variants that encode the same protein. [provided by RefSeq, Oct 2012]
PTM	Isopeptide bond, Lipoprotein, Myristate, Phosphoprotein, Ubl conjugation. [UniProt]
Cellular Localization	Cell membrane, Cell projection, Membrane. [UniProt]

Images



ARG44628 anti-BASP1 antibody IP image

Immunoprecipitation: HeLa lysate immunoprecipitated with 2.5 µg of ARG44628 anti-BASP1 antibody.