

**ARG44640**  
**anti-CINP antibody**Package: 50 µg  
Store at: -20°C

### Summary

Product Description	Mouse Monoclonal antibody recognizes CINP
Tested Reactivity	Hu
Tested Application	IP, WB
Host	Mouse
Clonality	Monoclonal
Isotype	IgG2a
Target Name	CINP
Species	Human
Conjugation	Un-conjugated
Alternate Names	CINP; Cyclin Dependent Kinase 2 Interacting Protein; Cyclin-Dependent Kinase 2-Interacting Protein; CDK2-Interacting Protein; MGC849

### Application Instructions

Application table	Application	Dilution
	IP	10 µg/mL
	WB	1 µg/mL
Application Note	* The dilutions indicate recommended starting dilutions and the optimal dilutions or concentrations should be determined by the scientist.	

### Properties

Form	Liquid
Purification	Protein A purification
Buffer	PBS with 0.09% sodium azide
Preservative	0.09% sodium azide
Storage instruction	For continuous use, store undiluted antibody at 2-8°C for up to a week. For long-term storage, aliquot and store at -20°C or below. Storage in frost free freezers is not recommended. Avoid repeated freeze/thaw cycles. Suggest spin the vial prior to opening. The antibody solution should be gently mixed before use.
Note	For laboratory research only, not for drug, diagnostic or other use.

### Bioinformation

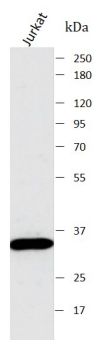
Gene Symbol	CINP
-------------	------

Gene Full Name	Cyclin Dependent Kinase 2 Interacting Protein
Background	The protein encoded by this gene is reported to be a component of the DNA replication complex as well as a genome-maintenance protein. It may interact with proteins important for replication initiation and has been shown to bind chromatin at the G1 phase of the cell cycle and dissociate from chromatin with replication initiation. It may also serve to regulate checkpoint signaling as part of the DNA damage response. Alternative splicing results in multiple transcript variants. [provided by RefSeq, Feb 2016]
Function	As part of 55LCC complex, also involved in the cytoplasmic maturation steps of pre-60S ribosomal particles by promoting the release of shuttling protein RSL24D1/RLP24 from the pre-ribosomal particles. [UniProt]
Calculated Mw	24 kDa
PTM	Acetylation, Phosphoprotein. [UniProt]
Cellular Localization	Nucleus. [UniProt]

Images

ARG44640 anti-CINP antibody WB image

Western blot: Jurkat stained with ARG44640 anti-CINP antibody at 1 µg/mL dilution.



ARG44640 anti-CINP antibody IP image

Immunoprecipitation: Jurkat lysate immunoprecipitated with 2.5 µg of ARG44640 anti-CINP antibody.

