

## ARG44644 anti-CMTM6 antibody

Package: 50 µg  
Store at: -20°C

### Summary

Product Description	Mouse Monoclonal antibody recognizes CMTM6
Tested Reactivity	Hu
Tested Application	IHC-P, IP, WB
Host	Mouse
Clonality	Monoclonal
Isotype	IgG1
Target Name	CMTM6
Species	Human
Conjugation	Un-conjugated
Alternate Names	CMTM6; CKLF Like MARVEL Transmembrane Domain Containing 6; CKLFSF6; CKLF-Like MARVEL Transmembrane Domain-Containing Protein 6; Chemokine-Like Factor Superfamily Member 6; Chemokine-Like Factor Super Family 6; Chemokine-Like Factor Superfamily 6; FLJ20396; CKLF-Like MARVEL Transmembrane Domain Containing 6; PRO2219

### Application Instructions

Application table	Application	Dilution
	IHC-P	5 µg/mL
	IP	10 µg/mL
	WB	1 µg/mL
Application Note	* The dilutions indicate recommended starting dilutions and the optimal dilutions or concentrations should be determined by the scientist.	

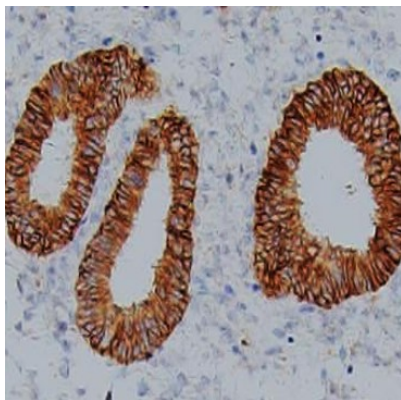
### Properties

Form	Liquid
Purification	Protein A purification
Buffer	PBS with 0.09% sodium azide
Preservative	0.09% sodium azide
Storage instruction	For continuous use, store undiluted antibody at 2-8°C for up to a week. For long-term storage, aliquot and store at -20°C or below. Storage in frost free freezers is not recommended. Avoid repeated freeze/thaw cycles. Suggest spin the vial prior to opening. The antibody solution should be gently mixed before use.
Note	For laboratory research only, not for drug, diagnostic or other use.

Bioinformation

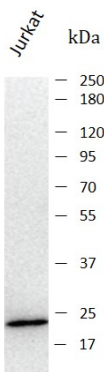
Gene Symbol	CMTM6
Gene Full Name	CKLF Like MARVEL Transmembrane Domain Containing 6
Background	This gene belongs to the chemokine-like factor gene superfamily, a novel family that is similar to the chemokine and transmembrane 4 superfamilies. This gene is one of several chemokine-like factor genes located in a cluster on chromosome 3. This gene is widely expressed in many tissues, but the exact function of the encoded protein is unknown. [provided by RefSeq, Jul 2008]
Function	Master regulator of recycling and plasma membrane expression of PD-L1/CD274, an immune inhibitory ligand critical for immune tolerance to self and antitumor immunity. Associates with both constitutive and IFNG-induced PD-L1/CD274 at recycling endosomes, where it protects PD-L1/CD274 from being targeted for lysosomal degradation, likely by preventing its STUB1-mediated ubiquitination. May stabilize PD-L1/CD274 expression on antigen presenting cells and potentiates inhibitory signaling by PDCD1/CD279, its receptor on T-cells, ultimately triggering T-cell anergy. [UniProt]
Calculated Mw	20 kDa
PTM	Acetylation, Phosphoprotein. [UniProt]
Cellular Localization	Cell membrane, Endosome, Membrane. [UniProt]

Images



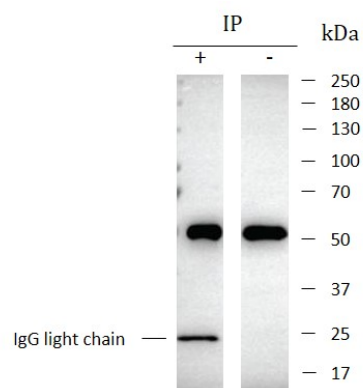
ARG44644 anti-CMTM6 antibody IHC-P image

Immunohistochemistry: Humam Endometrium stained with ARG44644 anti-CMTM6 antibody at 5  $\mu$ g/mL dilution.



ARG44644 anti-CMTM6 antibody WB image

Western blot: Jurkat stained with ARG44644 anti-CMTM6 antibody at 1  $\mu$ g/mL dilution.



#### ARG44644 anti-CMTM6 antibody IP image

Immunoprecipitation: Jurkat lysate immunoprecipitated with 2.5  $\mu$ g of ARG44644 anti-CMTM6 antibody.