

ARG44654 anti-EBAG9 / RCAS1 antibody

Package: 50 µg
Store at: -20°C

Summary

Product Description	Mouse Monoclonal antibody recognizes EBAG9 / RCAS1
Tested Reactivity	Hu
Tested Application	IHC-P, IP, WB
Host	Mouse
Clonality	Monoclonal
Isotype	IgG1
Target Name	EBAG9 / RCAS1
Species	Human
Conjugation	Un-conjugated
Alternate Names	EBAG9; Estrogen Receptor Binding Site Associated Antigen 9; RCAS1; EB9; Estrogen Receptor-Binding Fragment-Associated Gene 9 Protein; Receptor-Binding Cancer Antigen Expressed On SiSo Cells 1; Receptor-Binding Cancer Antigen Expressed On SiSo Cells; Cancer-Associated Surface Antigen RCAS1; PDAF

Application Instructions

Application table	Application	Dilution
	IHC-P	10 µg/mL
	IP	10 µg/mL
	WB	1 µg/mL
Application Note	* The dilutions indicate recommended starting dilutions and the optimal dilutions or concentrations should be determined by the scientist.	

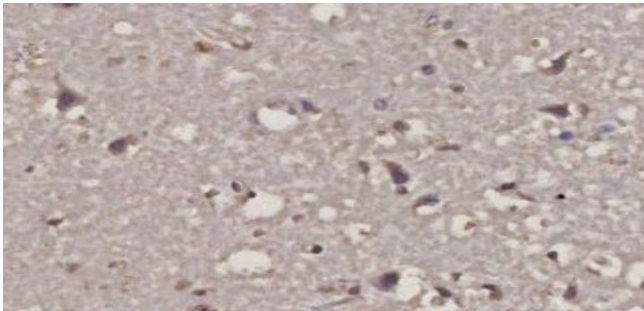
Properties

Form	Liquid
Purification	Protein A purification
Buffer	PBS with 0.09% sodium azide
Storage instruction	For continuous use, store undiluted antibody at 2-8°C for up to a week. For long-term storage, aliquot and store at -20°C or below. Storage in frost free freezers is not recommended. Avoid repeated freeze/thaw cycles. Suggest spin the vial prior to opening. The antibody solution should be gently mixed before use.
Note	For laboratory research only, not for drug, diagnostic or other use.

Bioinformation

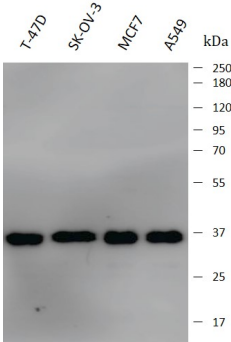
Gene Symbol	EBAG9
Gene Full Name	Estrogen Receptor Binding Site Associated Antigen 9
Background	This gene was identified as an estrogen-responsive gene. Regulation of transcription by estrogen is mediated by estrogen receptor, which binds to the estrogen-responsive element found in the 5'-flanking region of this gene. The encoded protein is a tumor-associated antigen that is expressed at high frequency in a variety of cancers. Alternate splicing results in multiple transcript variants. A pseudogene of this gene has been defined on chromosome 10. [provided by RefSeq, Jul 2013]
Function	May participate in suppression of cell proliferation and induces apoptotic cell death through activation of interleukin-1-beta converting enzyme (ICE)-like proteases. [UniProt]
PTM	Phosphoprotein. [UniProt]
Cellular Localization	Golgi apparatus, Membrane. [UniProt]

Images



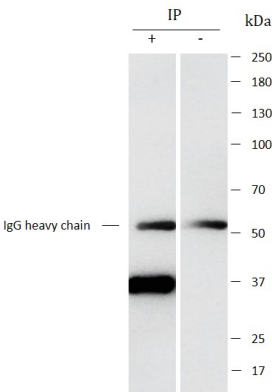
ARG44654 anti-EBAG9 / RCAS1 antibody IHC-P image

Immunohistochemistry: Human Brain stained with ARG44654 anti-EBAG9 / RCAS1 antibody at 10 µg/mL dilution.



ARG44654 anti-EBAG9 / RCAS1 antibody WB image

Western blot: T-47D, SK-OV-3, MCF7, A549 stained with ARG44654 anti-EBAG9 / RCAS1 antibody at 1 µg/mL dilution.



ARG44654 anti-EBAG9 / RCAS1 antibody IP image

Immunoprecipitation: T-47D lysate immunoprecipitated with 2.5 µg of ARG44654 anti-EBAG9 / RCAS1 antibody.