

ARG44665 anti-FTCD / 58K Golgi protein antibody

Package: 50 µg
Store at: -20°C

Summary

Product Description	Mouse Monoclonal antibody recognizes FTCD / 58K Golgi protein
Tested Reactivity	Hu, Rat
Tested Application	ELISA, IHC-P, IP, WB
Host	Mouse
Clonality	Monoclonal
Isotype	IgG1
Target Name	FTCD / 58K Golgi protein
Species	Human
Conjugation	Un-conjugated
Alternate Names	FTCD; Formimidoyltransferase Cyclodeaminase; Formimidoyltransferase-Cyclodeaminase; Formiminotransferase-Cyclodeaminase; LCHC1; Formiminotransferase Cyclodeaminase

Application Instructions

Application table	Application	Dilution
	ELISA	5 µg/mL
	IHC-P	2 µg/mL
	IP	10 µg/mL
	WB	1 µg/mL
Application Note	* The dilutions indicate recommended starting dilutions and the optimal dilutions or concentrations should be determined by the scientist.	

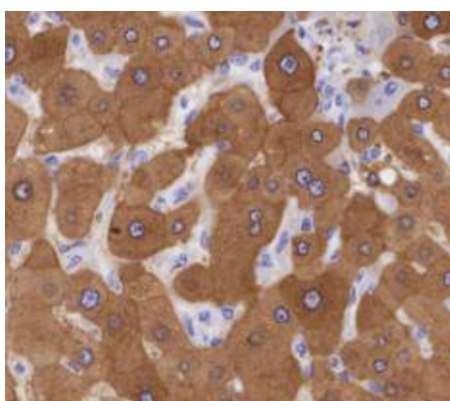
Properties

Form	Liquid
Purification	Protein A purification
Buffer	PBS with 0.09% sodium azide
Storage instruction	For continuous use, store undiluted antibody at 2-8°C for up to a week. For long-term storage, aliquot and store at -20°C or below. Storage in frost free freezers is not recommended. Avoid repeated freeze/thaw cycles. Suggest spin the vial prior to opening. The antibody solution should be gently mixed before use.
Note	For laboratory research only, not for drug, diagnostic or other use.

Bioinformation

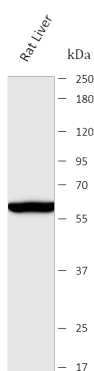
Gene Symbol	FTCD
Gene Full Name	Formimidoyltransferase Cyclodeaminase
Background	The protein encoded by this gene is a bifunctional enzyme that channels 1-carbon units from formiminoglutamate, a metabolite of the histidine degradation pathway, to the folate pool. Mutations in this gene are associated with glutamate formiminotransferase deficiency. Alternatively spliced transcript variants have been found for this gene.[provided by RefSeq, Dec 2009]
Function	<p>Folate-dependent enzyme, that displays both transferase and deaminase activity. Serves to channel one-carbon units from formiminoglutamate to the folate pool.</p> <p>Binds and promotes bundling of vimentin filaments originating from the Golgi. [UniProt]</p>
Calculated Mw	59 kDa
PTM	Phosphoprotein. [UniProt]
Cellular Localization	Cytoplasm, Cytoskeleton, Golgi apparatus. [UniProt]

Images



ARG44665 anti-FTCD / 58K Golgi protein antibody IHC-P image

Immunohistochemistry: Human Liver stained with ARG44665 anti-FTCD / 58K Golgi protein antibody at 2 µg/mL dilution.



ARG44665 anti-FTCD / 58K Golgi protein antibody WB image

Western blot: Rat Liver stained with ARG44665 anti-FTCD / 58K Golgi protein antibody at 1 µg/mL dilution.