

**ARG44666**  
**anti-GAS2 antibody**Package: 50 µg  
Store at: -20°C

### Summary

Product Description	Mouse Monoclonal antibody recognizes GAS2
Tested Reactivity	Hu
Tested Application	IHC-P, IP, WB
Host	Mouse
Clonality	Monoclonal
Isotype	IgG1
Target Name	GAS2
Species	Human
Conjugation	Un-conjugated
Alternate Names	GAS2; Growth Arrest Specific 2; Growth Arrest-Specific Protein 2; GAS-2

### Application Instructions

Application table	Application	Dilution
	IHC-P	10 µg/mL
	IP	10 µg/mL
	WB	1 µg/mL
Application Note	* The dilutions indicate recommended starting dilutions and the optimal dilutions or concentrations should be determined by the scientist.	

### Properties

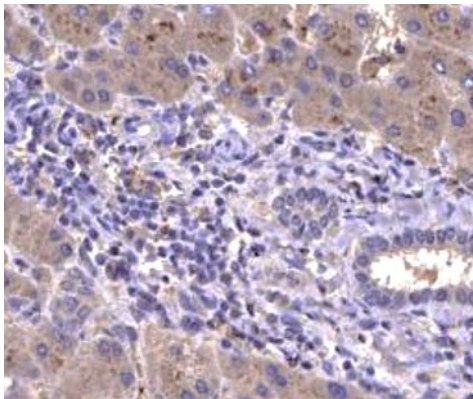
Form	Liquid
Purification	Protein A purification
Buffer	PBS with 0.09% sodium azide
Storage instruction	For continuous use, store undiluted antibody at 2-8°C for up to a week. For long-term storage, aliquot and store at -20°C or below. Storage in frost free freezers is not recommended. Avoid repeated freeze/thaw cycles. Suggest spin the vial prior to opening. The antibody solution should be gently mixed before use.
Note	For laboratory research only, not for drug, diagnostic or other use.

### Bioinformation

Gene Symbol	GAS2
Gene Full Name	Growth Arrest Specific 2

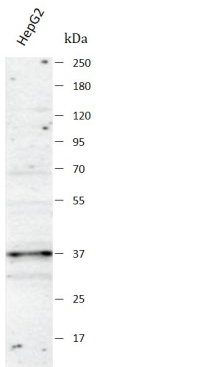
Background	The protein encoded by this gene is a caspase-3 substrate that plays a role in regulating microfilament and cell shape changes during apoptosis. It can also modulate cell susceptibility to p53-dependent apoptosis by inhibiting calpain activity. Alternative splicing results in multiple transcript variants. [provided by RefSeq, May 2017]
Function	May play a role in apoptosis by acting as a cell death substrate for caspases. Is cleaved during apoptosis and the cleaved form induces dramatic rearrangements of the actin cytoskeleton and potent changes in the shape of the affected cells. May be involved in the membrane ruffling process. [UniProt]
Calculated Mw	35 kDa
PTM	Phosphoprotein. [UniProt]
Cellular Localization	Cytoplasm, Cytoskeleton, Membrane. [UniProt]

Images



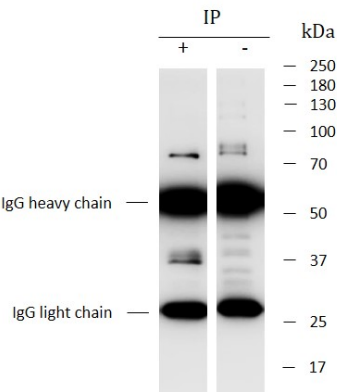
ARG44666 anti-GAS2 antibody IHC-P image

Immunohistochemistry: Human Liver stained with ARG44666 anti-GAS2 antibody at 10 µg/mL dilution.



ARG44666 anti-GAS2 antibody WB image

Western blot: HepG2 stained with ARG44666 anti-GAS2 antibody at 1 µg/mL dilution.



ARG44666 anti-GAS2 antibody IP image

Immunoprecipitation: HepG2 lysate immunoprecipitated with 2.5 µg of ARG44666 anti-GAS2 antibody.