

ARG44883 anti-NPPC antibody

Package: 50 µg
Store at: -20°C

Summary

Product Description	Mouse Monoclonal antibody recognizes NPPC
Tested Reactivity	Hu
Tested Application	IHC-P
Host	Mouse
Clonality	Monoclonal
Isotype	IgG1
Target Name	NPPC
Species	Human
Epitope	VPRTTPAEEL AEPQAAGGGQ KKGDKAPGGG GANLKGDRSR LLRDLRVDTK SRAAWARLLQ EHPNARKYKG ANKKGLSKGC FGLKLDRIGS
Conjugation	Un-conjugated
Alternate Names	NPPC; Natriuretic Peptide C; CNP; C-Type Natriuretic Peptide; CNP2; Natriuretic Peptide Precursor Type C; Natriuretic Peptide Precursor C

Application Instructions

Application table	Application	Dilution
	IHC-P	1:200
Application Note	* The dilutions indicate recommended starting dilutions and the optimal dilutions or concentrations should be determined by the scientist.	

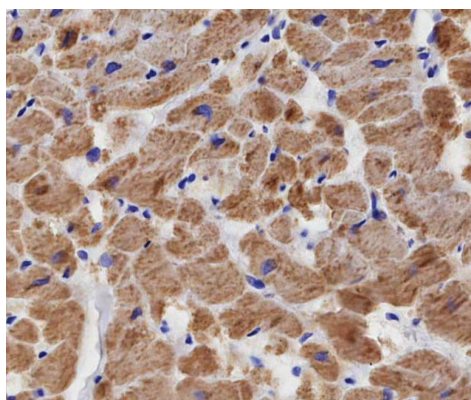
Properties

Form	Liquid
Purification	Protein A purification
Buffer	PBS with 0.09% sodium azide
Preservative	0.09% sodium azide
Storage instruction	For continuous use, store undiluted antibody at 2-8°C for up to a week. For long-term storage, aliquot and store at -20°C or below. Storage in frost free freezers is not recommended. Avoid repeated freeze/thaw cycles. Suggest spin the vial prior to opening. The antibody solution should be gently mixed before use.
Note	For laboratory research only, not for drug, diagnostic or other use.

Bioinformation

Gene Symbol	NPPC
Gene Full Name	Natriuretic Peptide C
Background	This gene encodes a preproprotein that is proteolytically processed to generate multiple protein products. These products include the cardiac natriuretic peptides CNP-53, CNP-29 and CNP-22, which belong to the natriuretic family of peptides. The encoded peptides exhibit vasorelaxation activity in laboratory animals and elevated levels of CNP-22 have been observed in the plasma of chronic heart failure patients. [provided by RefSeq, Oct 2015]
Function	Binds the clearance receptor NPR3. [Uniprot]
PTM	Cleavage on pair of basic residues, Disulfide bond. [Uniprot]
Cellular Localization	Secreted. [Uniprot]

Images



ARG44883 anti-NPPC antibody IHC-P image

Immunohistochemistry: Human heart muscle stained with ARG44883 anti-NPPC antibody at 5 µg/mL dilution.