

## ARG45056 anti-CD321 / JAM1 antibody

Package: 50 µg  
Store at: -20°C

### Summary

Product Description	Rabbit polyclonal antibody recognizes CD321 / JAM1.
Tested Reactivity	Hu
Tested Application	FACS, ICC/IF, IHC-P, WB
Host	Rabbit
Clonality	Polyclonal
Isotype	IgG
Target Name	CD321 / JAM1
Species	Human
Immunogen	Human JAM-A/F11R recombinant protein (a.a: S28-T294).
Conjugation	Un-conjugated
Alternate Names	F11R; F11 Receptor; PAM-1; JCAM; Junctional Adhesion Molecule 1; JAM-1; JAM-A; CD321; JAMA; JAM1; Junctional Adhesion Molecule A; Platelet Adhesion Molecule 1; Platelet F11 Receptor; CD321 Antigen; JAM; KAT

### Application Instructions

Application table	Application	Dilution
	FACS	1 - 3 µg / 1x10 <sup>6</sup> cells
	ICC/IF	5 µg / ml
	IHC-P	2 - 5 µg / ml
	WB	0.25 - 0.5 µg / ml
Application Note	* The dilutions indicate recommended starting dilutions and the optimal dilutions or concentrations should be determined by the scientist.	

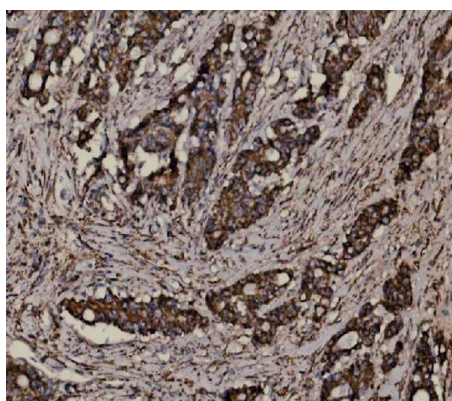
### Properties

Form	Liquid
Buffer	0.9% NaCl, 0.2% Na <sub>2</sub> HPO <sub>4</sub> and 4% Trehalose.
Stabilizer	4% Trehalose
Concentration	0.5 mg/ml
Storage instruction	For continuous use, store undiluted antibody at 2-8°C for up to a week. For long-term storage, aliquot and store at -20°C or below. Storage in frost free freezers is not recommended. Avoid repeated freeze/thaw cycles. Suggest spin the vial prior to opening. The antibody solution should be gently mixed before use.
Note	For laboratory research only, not for drug, diagnostic or other use.

## Bioinformation

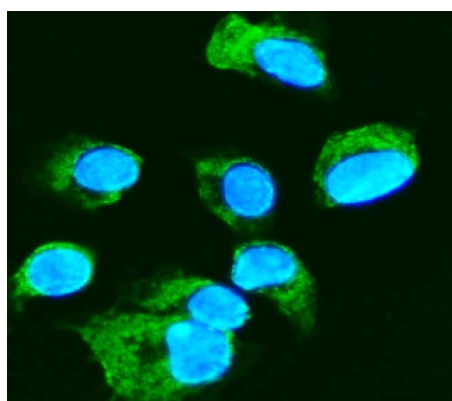
Gene Symbol	F11R
Gene Full Name	F11 receptor
Background	Tight junctions represent one mode of cell-to-cell adhesion in epithelial or endothelial cell sheets, forming continuous seals around cells and serving as a physical barrier to prevent solutes and water from passing freely through the paracellular space. The protein encoded by this immunoglobulin superfamily gene member is an important regulator of tight junction assembly in epithelia. In addition, the encoded protein can act as (1) a receptor for reovirus, (2) a ligand for the integrin LFA1, involved in leukocyte transmigration, and (3) a platelet receptor. Multiple 5' alternatively spliced variants, encoding the same protein, have been identified but their biological validity has not been established. [provided by RefSeq, Jul 2008]
Function	Plays a role in regulating monocyte transmigration involved in integrity of epithelial barrier. Involved in platelet activation. In case of orthoreovirus infection, serves as receptor for the virus. [UniProt]
Calculated Mw	33 kDa
PTM	Disulfide bond, Glycoprotein, Phosphoprotein. [UniProt]

## Images



ARG45056 anti-CD321 / JAM1 antibody IHC-P image

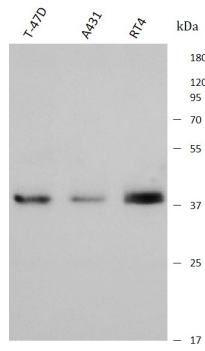
Immunohistochemistry: Human colonic adenocarcinoma stained with ARG45056 anti-CD321 / JAM1 antibody at 2 µg/ml dilution.



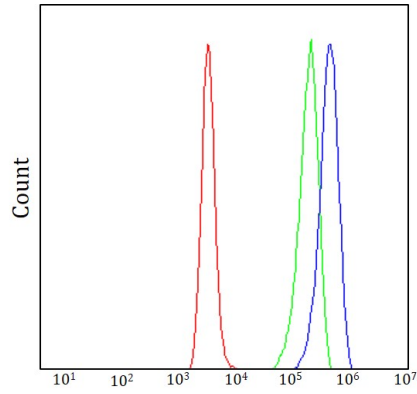
ARG45056 anti-CD321 / JAM1 antibody ICC/IF image

Immunofluorescence: T-47D stained with ARG45056 anti-CD321 / JAM1 antibody at 5 µg/ml dilution.

#### ARG45056 anti-CD321 / JAM1 antibody WB image



Western blot: T-47D, A431 and RT4 stained with ARG45056 anti-CD321 / JAM1 antibody at 0.5 µg/ml dilution.



#### ARG45056 anti-CD321 / JAM1 antibody FACS image

Flow Cytometry: Daudi stained with ARG45056 anti-CD321 / JAM1 antibody at 1 µg/ $1 \times 10^6$  cells dilution.