

ARG45123 anti-Patched 1 antibody

Package: 50 µl
Store at: -20°C

Summary

Product Description	Rabbit Polyclonal antibody recognizes Patched 1
Tested Reactivity	Hu, Ms, Rat, Chk
Tested Application	IHC-P, WB
Host	Rabbit
Clonality	Polyclonal
Isotype	IgG
Target Name	Patched 1
Species	Mouse
Conjugation	Un-conjugated
Alternate Names	PTCH1; Patched 1; BCNS; PTCH; Protein Patched Homolog 1; NBCCS; PTC1; PTC; Patched Homolog 1 (Drosophila); Patched (Drosophila) Homolog; Patched Homolog (Drosophila); BCNS1

Application Instructions

Application table	Application	Dilution
	IHC-P	Assay-dependent
	WB	1:500-1:1000
Application Note	* The dilutions indicate recommended starting dilutions and the optimal dilutions or concentrations should be determined by the scientist.	

Properties

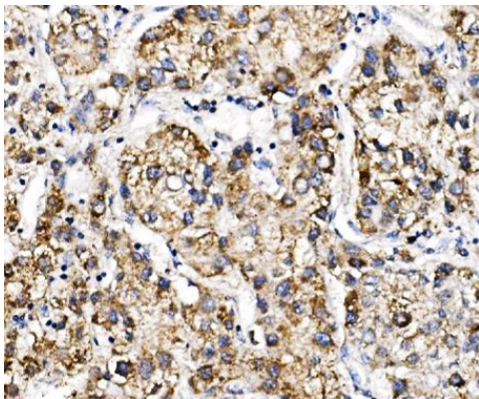
Form	Liquid
Purification	Antigen Affinity Purified
Buffer	PBS with 0.02% Sodium azide
Preservative	0.02% Sodium azide
Storage instruction	For continuous use, store undiluted antibody at 2-8°C for up to a week. For long-term storage, aliquot and store at -20°C or below. Storage in frost free freezers is not recommended. Avoid repeated freeze/thaw cycles. Suggest spin the vial prior to opening. The antibody solution should be gently mixed before use.
Note	For laboratory research only, not for drug, diagnostic or other use.

Bioinformation

Gene Symbol	PTCH1
-------------	-------

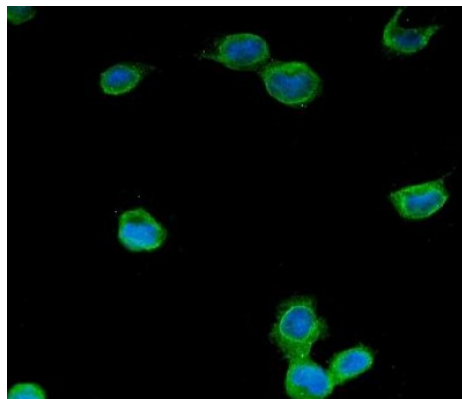
Gene Full Name	Patched 1
Background	This gene encodes a member of the patched family of proteins and a component of the hedgehog signaling pathway. Hedgehog signaling is important in embryonic development and tumorigenesis. The encoded protein is the receptor for the secreted hedgehog ligands, which include sonic hedgehog, indian hedgehog and desert hedgehog. Following binding by one of the hedgehog ligands, the encoded protein is trafficked away from the primary cilium, relieving inhibition of the G-protein-coupled receptor smoothened, which results in activation of downstream signaling. Mutations of this gene have been associated with basal cell nevus syndrome and holoprosencephaly. [provided by RefSeq, Aug 2017]
Function	Acts as a receptor for sonic hedgehog (SHH), indian hedgehog (IHH) and desert hedgehog (DHH). Associates with the smoothened protein (SMO) to transduce the hedgehog's proteins signal. Seems to have a tumor suppressor function, as inactivation of this protein is probably a necessary, if not sufficient step for tumorigenesis. [Uniprot]
Calculated Mw	161 kDa
PTM	Glycoprotein; Isopeptide bond; Phosphoprotein; Ubl conjugation. [Uniprot]
Cellular Localization	Cell membrane; Membrane. [Uniprot]

Images



ARG45124 anti-PTCH2 antibody IHC-P image

Immunohistochemistry: Human liver cancer stained with ARG45124 anti-PTCH2 antibody at 2 µg/ml dilution.



ARG45124 anti-PTCH2 antibody ICC/IF image

Immunofluorescence: U2OS stained with ARG45124 anti-PTCH2 antibody at 5 µg/ml dilution.

ARG45124 anti-PTCH2 antibody WB image

Western blot: THP-1 stained with ARG45124 anti-PTCH2 antibody at 0.5 µg/ml dilution.

