

## ARG45124 anti-PTCH2 antibody

Package: 50 µg  
Store at: -20°C

### Summary

Product Description	Rabbit Polyclonal antibody recognizes PTCH2
Tested Reactivity	Hu
Tested Application	ICC/IF, IHC-P, WB
Host	Rabbit
Clonality	Polyclonal
Isotype	IgG
Target Name	PTCH2
Species	Human
Immunogen	Synthetic peptide derived from Human PTCH2
Conjugation	Un-conjugated
Alternate Names	PTCH2; Patched 2; Protein Patched Homolog 2; PTC2; Patched (Drosophila) Homolog 2; Patched Homolog 2 (Drosophila); Patched Homolog 2

### Application Instructions

Application table	Application	Dilution
	ICC/IF	5 µg/ml
	IHC-P	2-5 µg/ml
	WB	0.5 µg/ml
Application Note	* The dilutions indicate recommended starting dilutions and the optimal dilutions or concentrations should be determined by the scientist.	

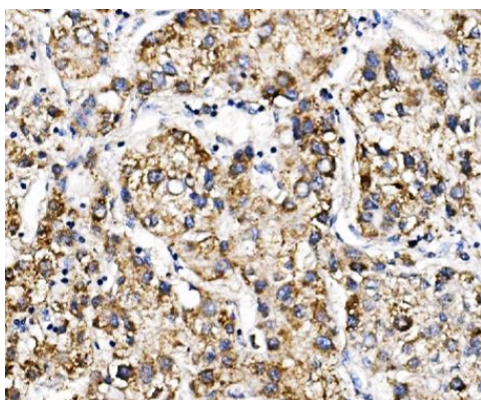
### Properties

Form	Liquid
Purification	Affinity purification with immunogen.
Buffer	0.9% NaCl, 0.2% Na <sub>2</sub> HPO <sub>4</sub> , 0.05% Sodium azide and 4% Trehalose.
Preservative	0.05% Sodium azide
Stabilizer	4% Trehalose
Storage instruction	For continuous use, store undiluted antibody at 2-8°C for up to a week. For long-term storage, aliquot and store at -20°C or below. Storage in frost free freezers is not recommended. Avoid repeated freeze/thaw cycles. Suggest spin the vial prior to opening. The antibody solution should be gently mixed before use.
Note	For laboratory research only, not for drug, diagnostic or other use.

## Bioinformation

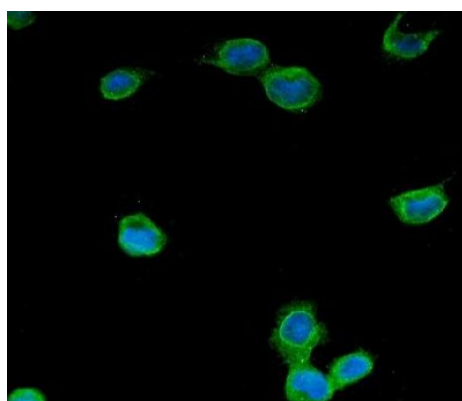
Gene Symbol	PTCH2
Gene Full Name	Patched 2
Background	This gene encodes a transmembrane receptor of the patched gene family. The encoded protein may function as a tumor suppressor in the hedgehog signaling pathway. Alterations in this gene have been associated with nevoid basal cell carcinoma syndrome, basal cell carcinoma, medulloblastoma, and susceptibility to congenital macrostomia. Alternatively spliced transcript variants have been described.[provided by RefSeq, Oct 2009]
Function	May have a role in epidermal development. May act as a receptor for Sonic hedgehog (SHH) [Uniprot]
Calculated Mw	131 kDa
PTM	Glycoprotein. [Uniprot]
Cellular Localization	Membrane. [Uniprot]

## Images



ARG45124 anti-PTCH2 antibody IHC-P image

Immunohistochemistry: Human liver cancer stained with ARG45124 anti-PTCH2 antibody at 2 µg/ml dilution.



ARG45124 anti-PTCH2 antibody ICC/IF image

Immunofluorescence: U2OS stained with ARG45124 anti-PTCH2 antibody at 5 µg/ml dilution.

ARG45124 anti-PTCH2 antibody WB image

Western blot: THP-1 stained with ARG45124 anti-PTCH2 antibody at 0.5 µg/ml dilution.

