

## ARG51429 anti-GLUT4 antibody

Package: 100 µl, 50 µl  
Store at: -20°C

### Summary

|                     |  |
|---------------------|--|
| Product Description | Rabbit Polyclonal antibody recognizes GLUT4  |
| Tested Reactivity   | Hu, Ms, Rat  |
| Tested Application  | WB   |
| Host                | Rabbit   |
| Clonality           | Polyclonal   |
| Isotype             | IgG  |
| Target Name         | GLUT4  |
| Species             | Human  |
| Immunogen           | Peptide sequence around aa.501~ 505( E-Y-L-G-P) derived from Human Glut4.  |
| Conjugation         | Un-conjugated  |
| Alternate Names     | Glucose transporter type 4, insulin-responsive; GLUT4; GLUT-4; Solute carrier family 2, facilitated glucose transporter member 4 |

### Application Instructions

|                   |  |                |
|-------------------|--|----------------|
| Application table | Application  | Dilution       |
|                   | WB   | 1:500 - 1:1000 |
| Application Note  | * The dilutions indicate recommended starting dilutions and the optimal dilutions or concentrations should be determined by the scientist. |                |

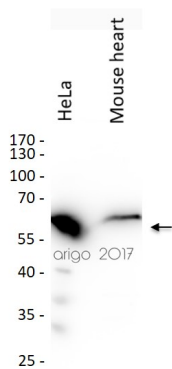
### Properties

|                     |   |
|---------------------|---|
| Form                | Liquid  |
| Purification        | Antibodies were produced by immunizing rabbits with KLH-conjugated synthetic peptide. Antibodies were purified by affinity-chromatography using epitope-specific peptide.   |
| Buffer              | PBS (without Mg2+ and Ca2+, pH 7.4), 150mM NaCl, 0.02% Sodium azide and 50% Glycerol.   |
| Preservative        | 0.02% Sodium azide  |
| Stabilizer          | 50% Glycerol  |
| Concentration       | 1 mg/ml   |
| Storage instruction | For continuous use, store undiluted antibody at 2-8°C for up to a week. For long-term storage, aliquot and store at -20°C. Storage in frost free freezers is not recommended. Avoid repeated freeze/thaw cycles. Suggest spin the vial prior to opening. The antibody solution should be gently mixed before use. |
| Note                | For laboratory research only, not for drug, diagnostic or other use.  |

Bioinformation

|                |   |
|----------------|---|
| Gene Symbol    | SLC2A4  |
| Gene Full Name | solute carrier family 2 (facilitated glucose transporter), member 4   |
| Background     | Insulin-regulated facilitative glucose transporter.   |
| Function       | Insulin-regulated facilitative glucose transporter. [UniProt]   |
| Research Area  | Cancer antibody; Cell Biology and Cellular Response antibody; Developmental Biology antibody; Metabolism antibody; Signaling Transduction antibody; Glucose uptake: Insulin Receptor Dependent Pathway Study antibody |
| Calculated Mw  | 55 kDa  |
| PTM            | Sumoylated.   |

Images



ARG51429 anti-GLUT4 antibody WB image

Western blot: 20 µl of HeLa cell lysate and 30 µl of Mouse heart lysate stained with ARG51429 anti-GLUT4 antibody at 1:500 dilution.