

ARG51532 anti-JunD phospho (Ser255) antibody

Package: 100 µl, 50 µl
Store at: -20°C

Summary

Product Description	Rabbit Polyclonal antibody recognizes JunD phospho (Ser255)
Tested Reactivity	Hu, Ms, Rat
Tested Application	IHC-P, WB
Host	Rabbit
Clonality	Polyclonal
Isotype	IgG
Target Name	JunD
Species	Human
Immunogen	Peptide sequence around phosphorylation site of serine 255 (G-E-S(p)-P-P) derived from Human JunD.
Conjugation	Un-conjugated
Alternate Names	AP-1; Transcription factor jun-D

Application Instructions

Application table	Application	Dilution
	IHC-P	1:50 - 1:100
	WB	1:500 - 1:1000
Application Note	* The dilutions indicate recommended starting dilutions and the optimal dilutions or concentrations should be determined by the scientist.	

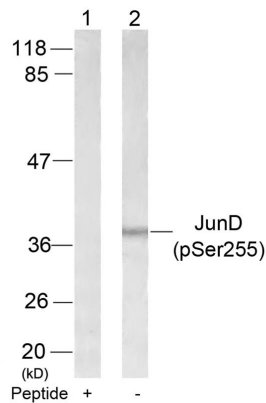
Properties

Form	Liquid
Purification	Antibodies were produced by immunizing rabbits with KLH-conjugated synthetic phosphopeptide. Antibodies were purified by affinity-chromatography using epitope-specific phosphopeptide. In addition, non-phospho specific antibodies were removed by chromatography using non-phosphopeptide.
Buffer	PBS (without Mg2+ and Ca2+, pH 7.4), 150mM NaCl, 0.02% Sodium azide and 50% Glycerol.
Preservative	0.02% Sodium azide
Stabilizer	50% Glycerol
Concentration	1 mg/ml
Storage instruction	For continuous use, store undiluted antibody at 2-8°C for up to a week. For long-term storage, aliquot and store at -20°C. Storage in frost free freezers is not recommended. Avoid repeated freeze/thaw cycles. Suggest spin the vial prior to opening. The antibody solution should be gently mixed before use.
Note	For laboratory research only, not for drug, diagnostic or other use.

Bioinformation

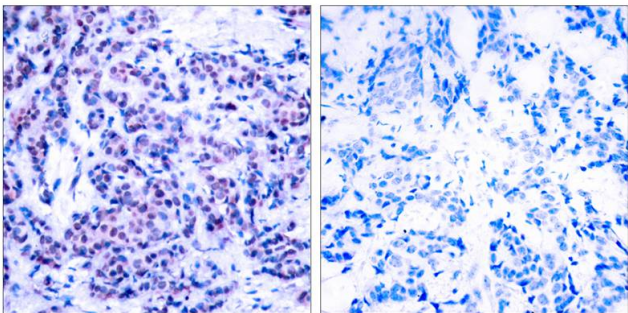
Gene Symbol	JUND
Gene Full Name	jun D proto-oncogene
Background	Binds an AP-1 site and upon cotransfection stimulates the activity of a promoter that bears an AP-1 site.
Function	Transcription factor binding AP-1 sites. [UniProt]
Research Area	Cell Biology and Cellular Response antibody; Gene Regulation antibody
Calculated Mw	35 kDa

Images



ARG51532 anti-JunD phospho (Ser255) antibody WB image

Western blot: Extracts from 293 cells stained with ARG51532 anti-JunD phospho (Ser255) antibody (Lane 2) and the same antibody preincubated with blocking peptide (Lane1).



ARG51532 anti-JunD phospho (Ser255) antibody IHC-P image

Immunohistochemistry: Paraffin-embedded Human breast carcinoma tissue stained with ARG51532 anti-JunD phospho (Ser255) antibody (left) or the same antibody preincubated with blocking peptide (right).