

## ARG51616 anti-Myosin Light Chain 9 phospho (Ser19) antibody

Package: 100 µl, 50 µl  
Store at: -20°C

### Summary

Product Description	Rabbit Polyclonal antibody recognizes Myosin Light Chain 9 phospho (Ser19)
Tested Reactivity	Hu, Ms, Rat
Tested Application	IHC-P, WB
Host	Rabbit
Clonality	Polyclonal
Isotype	IgG
Target Name	Myosin Light Chain 9
Species	Human
Immunogen	Peptide sequence around phosphorylation site of serine 19 (A-T-S(p)-N-V) derived from Human Myosin Light Chain 9. (NP_006088.2)
Conjugation	Un-conjugated
Alternate Names	LC20; Myosin RLC; 20 kDa myosin light chain; Myosin regulatory light chain 2, smooth muscle isoform; MYRL2; MLC2; Myosin regulatory light chain MRLC1; Myosin regulatory light chain 9; Myosin regulatory light polypeptide 9; MRLC1; MLC-2C

### Application Instructions

Application table	Application	Dilution
	IHC-P	1:50 - 1:100
	WB	1:500 - 1:1000
Application Note	* The dilutions indicate recommended starting dilutions and the optimal dilutions or concentrations should be determined by the scientist.	

### Properties

Form	Liquid
Purification	Antibodies were produced by immunizing rabbits with KLH-conjugated synthetic phosphopeptide. Antibodies were purified by affinity-chromatography using epitope-specific phosphopeptide. In addition, non-phospho specific antibodies were removed by chromatography using non-phosphopeptide.
Buffer	PBS (without Mg <sup>2+</sup> and Ca <sup>2+</sup> , pH 7.4), 150mM NaCl, 0.02% Sodium azide and 50% Glycerol.
Preservative	0.02% Sodium azide
Stabilizer	50% Glycerol
Concentration	1 mg/ml
Storage instruction	For continuous use, store undiluted antibody at 2-8°C for up to a week. For long-term storage, aliquot and store at -20°C. Storage in frost free freezers is not recommended. Avoid repeated freeze/thaw

cycles. Suggest spin the vial prior to opening. The antibody solution should be gently mixed before use.

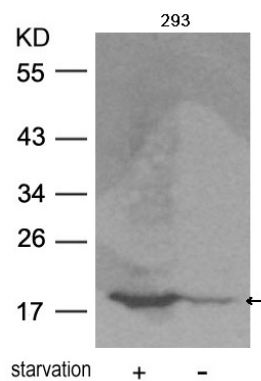
#### Note

For laboratory research only, not for drug, diagnostic or other use.

## Bioinformation

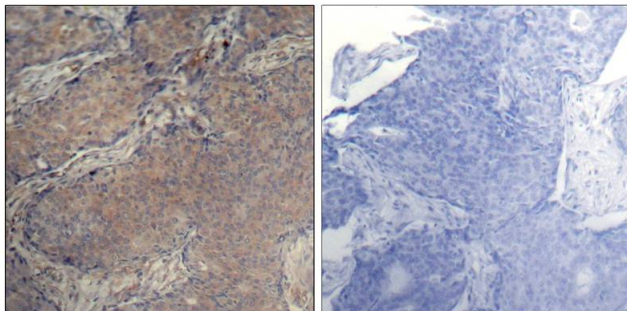
Gene Symbol	MYL9
Gene Full Name	myosin, light chain 9, regulatory
Background	Myosin regulatory subunit that plays an important role in regulation of both smooth muscle and nonmuscle cell contractile activity via its phosphorylation. Implicated in cytokinesis, receptor capping, and cell locomotion
Research Area	Signaling Transduction antibody
Calculated Mw	20 kDa
PTM	Phosphorylation increases the actin-activated myosin ATPase activity and thereby regulates the contractile activity. It is required to generate the driving force in the migration of the cells but not necessary for localization of myosin-2 at the leading edge.

## Images



ARG51616 anti-Myosin Light Chain 9 phospho (Ser19) antibody WB image

Western blot: Extracts from 293 cells untreated or treated with starvation stained with ARG51616 anti-Myosin Light Chain 9 phospho (Ser19) antibody.



ARG51616 anti-Myosin Light Chain 9 phospho (Ser19) antibody IHC-P image

Immunohistochemistry: Paraffin-embedded Human breast carcinoma tissue stained with ARG51616 anti-Myosin Light Chain 9 phospho (Ser19) antibody (left) or the same antibody preincubated with blocking peptide (right).