

## ARG51648 anti-JAK1 phospho (Tyr1022) antibody

Package: 100 µl, 50 µl  
Store at: -20°C

### Summary

Product Description	Rabbit Polyclonal antibody recognizes JAK1 phospho (Tyr1022)
Tested Reactivity	Hu, Ms, Rat
Tested Application	IHC-P, WB
Host	Rabbit
Clonality	Polyclonal
Isotype	IgG
Target Name	JAK1
Species	Human
Immunogen	Peptide sequence around phosphorylation site of tyrosine 1022 (K-E-Y(p)-Y-T) derived from Human JAK1.
Conjugation	Un-conjugated
Alternate Names	JTK3; Janus kinase 1; JAK-1; Tyrosine-protein kinase JAK1; JAK1A; JAK1B; EC 2.7.10.2

### Application Instructions

Application table	Application	Dilution
	IHC-P	1:50 - 1:100
	WB	1:500 - 1:1000
Application Note	* The dilutions indicate recommended starting dilutions and the optimal dilutions or concentrations should be determined by the scientist.	

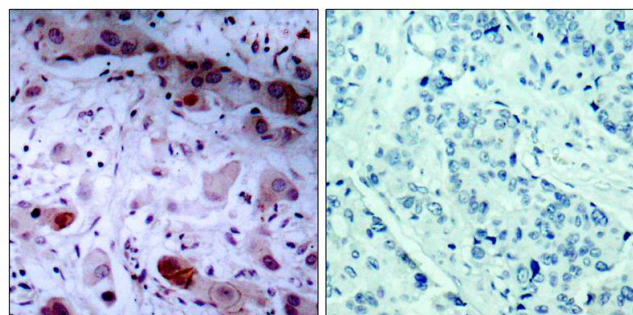
### Properties

Form	Liquid
Purification	Antibodies were produced by immunizing rabbits with KLH-conjugated synthetic phosphopeptide. Antibodies were purified by affinity-chromatography using epitope-specific phosphopeptide. In addition, non-phospho specific antibodies were removed by chromatography using non-phosphopeptide.
Buffer	PBS (without Mg <sup>2+</sup> and Ca <sup>2+</sup> , pH 7.4), 150mM NaCl, 0.02% Sodium azide and 50% Glycerol.
Preservative	0.02% Sodium azide
Stabilizer	50% Glycerol
Concentration	1 mg/ml
Storage instruction	For continuous use, store undiluted antibody at 2-8°C for up to a week. For long-term storage, aliquot and store at -20°C. Storage in frost free freezers is not recommended. Avoid repeated freeze/thaw cycles. Suggest spin the vial prior to opening. The antibody solution should be gently mixed before use.

Database links	<a href="#">GeneID: 3716 Human</a> <a href="#">Swiss-port # P23458 Human</a>
Gene Symbol	JAK1
Gene Full Name	Janus kinase 1
Background	Tyrosine kinase of the non-receptor type, involved in the IFN-alpha/beta/gamma signal pathway. Kinase partner for the interleukin (IL)-2 receptor.
Function	Tyrosine kinase of the non-receptor type, involved in the IFN-alpha/beta/gamma signal pathway. Kinase partner for the interleukin (IL)-2 receptor. [UniProt]
Research Area	Cancer antibody; Cell Biology and Cellular Response antibody; Cell Death antibody; Gene Regulation antibody; Signaling Transduction antibody
Calculated Mw	133 kDa
PTM	Autophosphorylated (PubMed:7615558). Phosphorylated on tyrosine residues in response to interferon gamma signaling (PubMed:7615558). Dephosphorylation of Tyr-1034 and Tyr-1035 by PTPN2 negatively regulates cytokine-mediated signaling (PubMed:11909529). Ubiquitinated by RNF125; leading to its degradation by the proteasome.

Western blot analysis of JAK1 phosphorylation in HT29 cells. The blot shows JAK1 (pTyr1022) levels in cells treated with UV (UV- and UV+). Molecular weight markers (KD) are indicated on the left: 130, 95, 72, and 55. The UV+ lane shows a strong band at approximately 130 KD, while the UV- lane shows a much weaker band.

Western blot: Extracts from HT29 cells untreated or treated with UV stained with ARG51648 anti-JAK1 phospho (Tyr1022) antibody.



Immunohistochemistry: Paraffin-embedded Human breast carcinoma tissue stained with ARG51648 anti-JAK1 phospho (Tyr1022) antibody (left) or the same antibody preincubated with blocking peptide (right).