

ARG51677 anti-ADD1 phospho (Ser726) antibody

Package: 100 µl, 50 µl
Store at: -20°C

Summary

Product Description	Rabbit Polyclonal antibody recognizes ADD1 phospho (Ser726)
Tested Reactivity	Hu, Ms, Rat
Tested Application	ICC/IF, IHC-P, WB
Host	Rabbit
Clonality	Polyclonal
Isotype	IgG
Target Name	ADD1
Species	Human
Immunogen	Peptide sequence around phosphorylation site of serine 726 (T-P-S(p)-F-L) derived from Human ADD1.
Conjugation	Un-conjugated
Alternate Names	Erythrocyte adducin subunit alpha; Alpha-adducin; ADDA

Application Instructions

Application table	Application	Dilution
	ICC/IF	1:100 - 1:200
	IHC-P	1:50 - 1:100
	WB	1:500 - 1:1000
Application Note	* The dilutions indicate recommended starting dilutions and the optimal dilutions or concentrations should be determined by the scientist.	

Properties

Form	Liquid
Purification	Antibodies were produced by immunizing rabbits with KLH-conjugated synthetic phosphopeptide. Antibodies were purified by affinity-chromatography using epitope-specific phosphopeptide. In addition, non-phospho specific antibodies were removed by chromatography using non-phosphopeptide.
Buffer	PBS (without Mg ²⁺ and Ca ²⁺ , pH 7.4), 150mM NaCl, 0.02% Sodium azide and 50% Glycerol.
Preservative	0.02% Sodium azide
Stabilizer	50% Glycerol
Concentration	1 mg/ml
Storage instruction	For continuous use, store undiluted antibody at 2-8°C for up to a week. For long-term storage, aliquot and store at -20°C. Storage in frost free freezers is not recommended. Avoid repeated freeze/thaw cycles. Suggest spin the vial prior to opening. The antibody solution should be gently mixed before use.

Bioinformation

Gene Symbol	ADD1
Gene Full Name	adducin 1 (alpha)
Background	Adducins are a family of cytoskeleton proteins encoded by three genes (alpha, beta, gamma). Adducin is a heterodimeric protein that consists of related subunits, which are produced from distinct genes but share a similar structure. Alpha- and beta-adducin include a protease-resistant N-terminal region and a protease-sensitive, hydrophilic C-terminal region. Alpha- and gamma-adducins are ubiquitously expressed. In contrast, beta-adducin is expressed at high levels in brain and hematopoietic tissues. Adducin binds with high affinity to Ca(2+)/calmodulin and is a substrate for protein kinases A and C. Alternative splicing results in multiple variants encoding distinct isoforms; however, not all variants have been fully described.
Function	Membrane-cytoskeleton-associated protein that promotes the assembly of the spectrin-actin network. Binds to calmodulin. [UniProt]
Research Area	Controls and Markers antibody; Signaling Transduction antibody
Calculated Mw	81 kDa

Images

KD

170

130

95

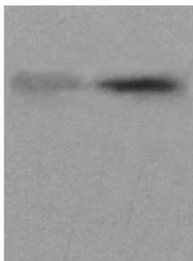
72

Peptide

+

-

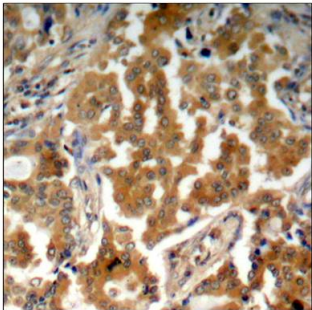
Hela

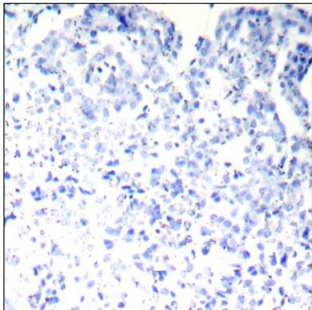


ADD1 (pSer726)

ARG51677 anti-ADD1 phospho (Ser726) antibody WB image

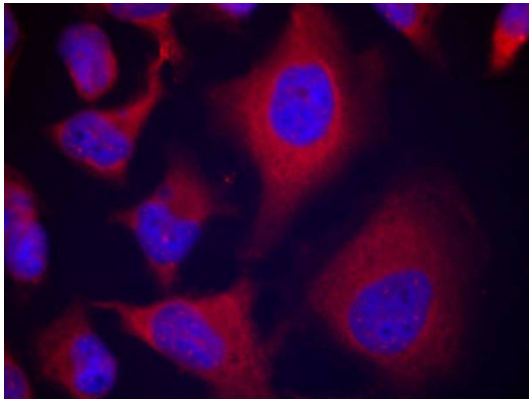
Western blot: Extracts from HeLa cells stained with ARG51677 anti-ADD1 phospho (Ser726) antibody and the same antibody preincubated with blocking peptide.





ARG51677 anti-ADD1 phospho (Ser726) antibody IHC-P image

Immunohistochemistry: Paraffin-embedded Human lung carcinoma tissue stained with ARG51677 anti-ADD1 phospho (Ser726) antibody (left) or the same antibody preincubated with blocking peptide (right).



ARG51677 anti-ADD1 phospho (Ser726) antibody ICC/IF image

Immunofluorescence: methanol-fixed HeLa cells stained with ARG51677 anti-ADD1 phospho (Ser726) antibody.