

ARG51692 anti-Bcr phospho (Tyr177) antibody

Package: 100 µl, 50 µl
Store at: -20°C

Summary

| | |
|---------------------|---|
| Product Description | Rabbit Polyclonal antibody recognizes Bcr phospho (Tyr177) |
| Tested Reactivity | Hu, Ms |
| Tested Application | IHC-P, WB |
| Host | Rabbit |
| Clonality | Polyclonal |
| Isotype | IgG |
| Target Name | Bcr |
| Species | Human |
| Immunogen | Peptide sequence around phosphorylation site of tyrosine 177 (P-F-Y(p)-V-N) derived from Human Bcr. |
| Conjugation | Un-conjugated |
| Alternate Names | ALL; CML; Renal carcinoma antigen NY-REN-26; D22S11; PHL; D22S662; BCR1; EC 2.7.11.1; Breakpoint cluster region protein |

Application Instructions

| Application table | Application | Dilution |
|-------------------|-------------|----------------|
| | IHC-P | 1:50 - 1:100 |
| | WB | 1:500 - 1:1000 |

Application Note * The dilutions indicate recommended starting dilutions and the optimal dilutions or concentrations should be determined by the scientist.

Properties

| | |
|---------------------|---|
| Form | Liquid |
| Purification | Antibodies were produced by immunizing rabbits with KLH-conjugated synthetic phosphopeptide. Antibodies were purified by affinity-chromatography using epitope-specific phosphopeptide. In addition, non-phospho specific antibodies were removed by chromatography using non-phosphopeptide. |
| Buffer | PBS (without Mg ²⁺ and Ca ²⁺ , pH 7.4), 150mM NaCl, 0.02% Sodium azide and 50% Glycerol. |
| Preservative | 0.02% Sodium azide |
| Stabilizer | 50% Glycerol |
| Concentration | 1 mg/ml |
| Storage instruction | For continuous use, store undiluted antibody at 2-8°C for up to a week. For long-term storage, aliquot and store at -20°C. Storage in frost free freezers is not recommended. Avoid repeated freeze/thaw cycles. Suggest spin the vial prior to opening. The antibody solution should be gently mixed before use. |

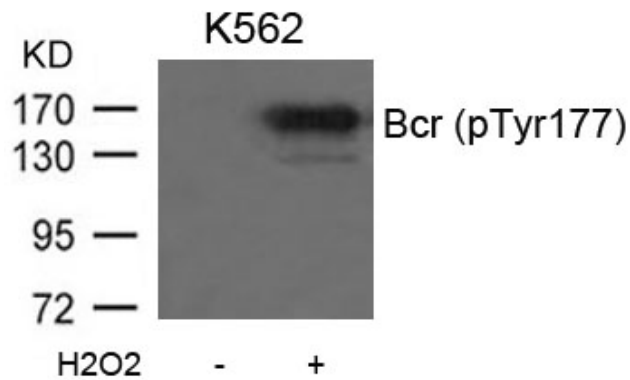
Note

For laboratory research only, not for drug, diagnostic or other use.

Bioinformation

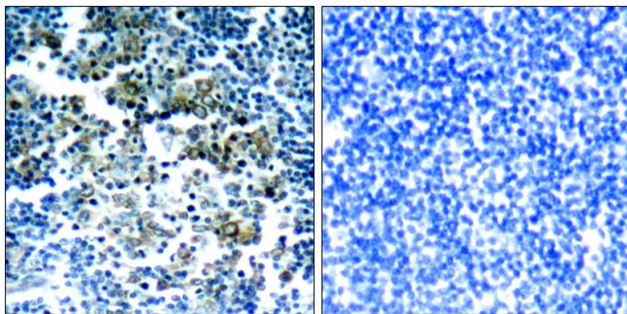
| | |
|----------------|--|
| Database links | GeneID: 110279 Mouse GeneID: 613 Human Swiss-port # P11274 Human Swiss-port # Q6PAJ1 Mouse |
| Gene Symbol | BCR |
| Gene Full Name | breakpoint cluster region |
| Background | GTPase-activating protein for RAC1 and CDC42. Promotes the exchange of RAC or CDC42-bound GDP by GTP, thereby activating them. Displays serine/threonine kinase activity. |
| Function | GTPase-activating protein for RAC1 and CDC42. Promotes the exchange of RAC or CDC42-bound GDP by GTP, thereby activating them. Displays serine/threonine kinase activity. [UniProt] |
| Research Area | Cancer antibody; Signaling Transduction antibody |
| Calculated Mw | 143 kDa |
| PTM | Autophosphorylated. Phosphorylated by FES/FPS on tyrosine residues, leading to down-regulation of the BCR kinase activity. Phosphorylation at Tyr-177 by HCK is important for interaction with GRB2. |

Images



ARG51692 anti-Bcr phospho (Tyr177) antibody WB image

Western blot: Extracts from K562 cells untreated or treated with H2O2 stained with ARG51692 anti-Bcr phospho (Tyr177) antibody.



ARG51692 anti-Bcr phospho (Tyr177) antibody IHC-P image

Immunohistochemistry: Paraffin-embedded Human tonsil tumor tissue stained with ARG51692 anti-Bcr phospho (Tyr177) antibody (left) or the same antibody preincubated with blocking peptide (right).