

ARG51694 anti-Ezrin phospho (Thr567) antibody

Package: 100 µl, 50 µl
Store at: -20°C

Summary

Product Description	Rabbit Polyclonal antibody recognizes Ezrin phospho (Thr567)
Tested Reactivity	Hu, Ms, Rat
Tested Application	WB
Host	Rabbit
Clonality	Polyclonal
Isotype	IgG
Target Name	Ezrin
Species	Human
Immunogen	Peptide sequence around phosphorylation site of threonine 567 (Y-K-T(p)-L-R) derived from Human Ezrin.
Conjugation	Un-conjugated
Alternate Names	Ezrin; p81; HEL-S-105; VIL2; CVL; Cytovillin; CVIL; Villin-2

Application Instructions

Application table	Application	Dilution
	WB	1:500 - 1:1000
Application Note	* The dilutions indicate recommended starting dilutions and the optimal dilutions or concentrations should be determined by the scientist.	

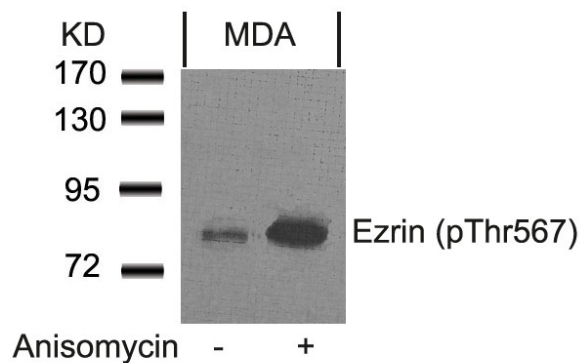
Properties

Form	Liquid
Purification	Antibodies were produced by immunizing rabbits with KLH-conjugated synthetic phosphopeptide. Antibodies were purified by affinity-chromatography using epitope-specific phosphopeptide. In addition, non-phospho specific antibodies were removed by chromatography using non-phosphopeptide.
Buffer	PBS (without Mg ²⁺ and Ca ²⁺ , pH 7.4), 150mM NaCl, 0.02% Sodium azide and 50% Glycerol.
Preservative	0.02% Sodium azide
Stabilizer	50% Glycerol
Concentration	1 mg/ml
Storage instruction	For continuous use, store undiluted antibody at 2-8°C for up to a week. For long-term storage, aliquot and store at -20°C. Storage in frost free freezers is not recommended. Avoid repeated freeze/thaw cycles. Suggest spin the vial prior to opening. The antibody solution should be gently mixed before use.
Note	For laboratory research only, not for drug, diagnostic or other use.

Bioinformation

Gene Symbol	EZR
Gene Full Name	ezrin
Background	Probably involved in connections of major cytoskeletal structures to the plasma membrane. In epithelial cells, required for the formation of microvilli and membrane ruffles on the apical pole. Along with PLEKHG6, required for normal macropinocytosis.
Function	Probably involved in connections of major cytoskeletal structures to the plasma membrane. In epithelial cells, required for the formation of microvilli and membrane ruffles on the apical pole. Along with PLEKHG6, required for normal macropinocytosis. [UniProt]
Highlight	Related Antibody Duos and Panels: ARG30231 Phospho Ezrin Antibody Duo (Total, pT567) Related products: Ezrin antibodies ; Ezrin Duos / Panels ; Anti-Rabbit IgG secondary antibodies ;
Research Area	Cancer antibody; Signaling Transduction antibody
Calculated Mw	69 kDa
PTM	Phosphorylated by tyrosine-protein kinases. Phosphorylation by ROCK2 suppresses the head-to-tail association of the N-terminal and C-terminal halves resulting in an opened conformation which is capable of actin and membrane-binding (By similarity). S-nitrosylation is induced by interferon-gamma and oxidatively-modified low-density lipoprotein (LDL(ox)) possibly implicating the iNOS-S100A8/9 transnitrosylase complex.

Images



ARG51694 anti-Ezrin phospho (Thr567) antibody WB image

Western blot: Extracts from MDA cells untreated or treated with anisomycin stained with ARG51694 anti-Ezrin phospho (Thr567) antibody.