

## ARG51704 anti-IkB epsilon phospho (Ser22) antibody

Package: 100 µl, 50 µl  
Store at: -20°C

### Summary

Product Description	Rabbit Polyclonal antibody recognizes IκB epsilon phospho (Ser22)
Tested Reactivity	Hu, Ms
Tested Application	IHC-P, WB
Host	Rabbit
Clonality	Polyclonal
Isotype	IgG
Target Name	IκB epsilon
Species	Human
Immunogen	Peptide sequence around phosphorylation site of serine 22 (I-E-S(p)-L-R) derived from Human IκB-ε.
Conjugation	Un-conjugated
Alternate Names	IκB-epsilon; NF-kappa-BIE; IκappaBepsilon; NF-kappa-B inhibitor epsilon; IκB-E; IκBE; I-kappa-B-epsilon

### Application Instructions

Application table	Application	Dilution
	IHC-P	1:50 - 1:100
	WB	1:500 - 1:1000
Application Note	* The dilutions indicate recommended starting dilutions and the optimal dilutions or concentrations should be determined by the scientist.	

### Properties

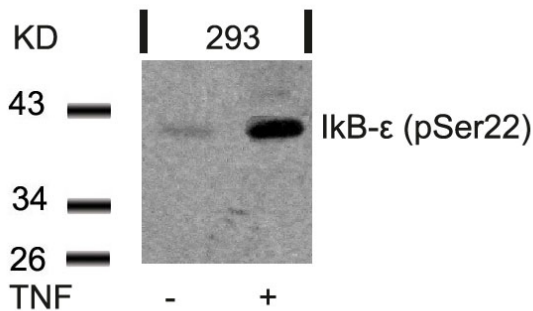
Form	Liquid
Purification	Antibodies were produced by immunizing rabbits with KLH-conjugated synthetic phosphopeptide. Antibodies were purified by affinity-chromatography using epitope-specific phosphopeptide. In addition, non-phospho specific antibodies were removed by chromatography using non-phosphopeptide.
Buffer	PBS (without Mg <sup>2+</sup> and Ca <sup>2+</sup> , pH 7.4), 150mM NaCl, 0.02% Sodium azide and 50% Glycerol.
Preservative	0.02% Sodium azide
Stabilizer	50% Glycerol
Concentration	1 mg/ml
Storage instruction	For continuous use, store undiluted antibody at 2-8°C for up to a week. For long-term storage, aliquot and store at -20°C. Storage in frost free freezers is not recommended. Avoid repeated freeze/thaw cycles. Suggest spin the vial prior to opening. The antibody solution should be gently mixed before use.
Note	For laboratory research only, not for drug, diagnostic or other use.

## Bioinformation

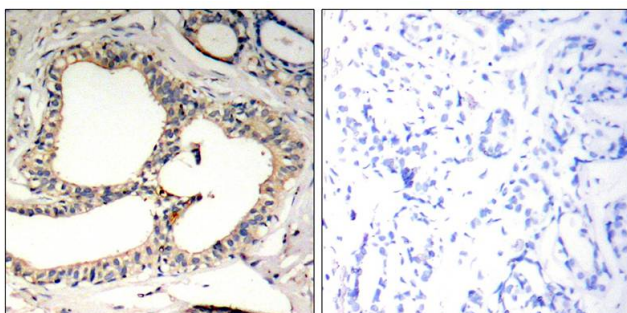
Database links	<a href="#">GeneID: 18037 Mouse</a> <a href="#">GeneID: 4794 Human</a> <a href="#">Swiss-port # O00221 Human</a> <a href="#">Swiss-port # O54910 Mouse</a>
Gene Symbol	NFKBIE
Gene Full Name	nuclear factor of kappa light polypeptide gene enhancer in B-cells inhibitor, epsilon
Background	Inhibits NF-kappa-B by complexing with and trapping it in the cytoplasm. Inhibits DNA-binding of NF-kappa-B p50-p65 and p50-c-Rel complexes.
Function	Inhibits NF-kappa-B by complexing with and trapping it in the cytoplasm. Inhibits DNA-binding of NF-kappa-B p50-p65 and p50-c-Rel complexes. [UniProt]
Research Area	Gene Regulation antibody; Immune System antibody; Signaling Transduction antibody
Calculated Mw	53 kDa
PTM	Serine phosphorylated; followed by proteasome-dependent degradation.

## Images

ARG51704 anti-IkB epsilon phospho (Ser22) antibody WB image



Western blot: Extracts from 293 cells untreated or treated with TNF stained with ARG51704 anti-IkB epsilon phospho (Ser22) antibody.



ARG51704 anti-IkB epsilon phospho (Ser22) antibody IHC-P image

Immunohistochemistry: Paraffin-embedded Human breast carcinoma tissue stained with ARG51704 anti-IkB epsilon phospho (Ser22) antibody (left) or the same antibody preincubated with blocking peptide (right).