

## ARG51770 anti-GAB1 phospho (Tyr627) antibody

Package: 100 µl, 50 µl  
Store at: -20°C

### Summary

Product Description	Rabbit Polyclonal antibody recognizes GAB1 phospho (Tyr627)
Tested Reactivity	Hu, Ms
Tested Application	ICC/IF, WB
Host	Rabbit
Clonality	Polyclonal
Isotype	IgG
Target Name	GAB1
Species	Human
Immunogen	Peptide sequence around phosphorylation site of tyrosine 627 (V-E-Y(p)-L-D) derived from Human Gab1.
Conjugation	Un-conjugated
Alternate Names	Growth factor receptor bound protein 2-associated protein 1; GRB2-associated binder 1; GRB2-associated-binding protein 1

### Application Instructions

Application table	Application	Dilution
	ICC/IF	1:100 - 1:200
	WB	1:500 - 1:1000
Application Note	* The dilutions indicate recommended starting dilutions and the optimal dilutions or concentrations should be determined by the scientist.	

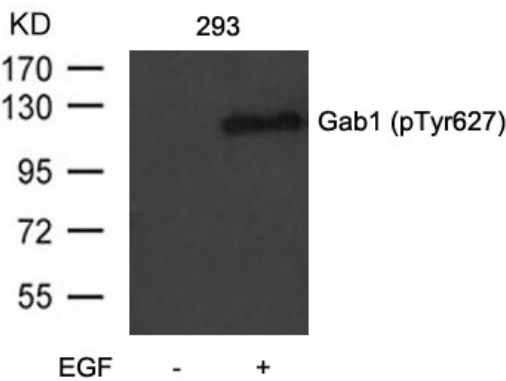
### Properties

Form	Liquid
Purification	Antibodies were produced by immunizing rabbits with KLH-conjugated synthetic phosphopeptide. Antibodies were purified by affinity-chromatography using epitope-specific phosphopeptide. In addition, non-phospho specific antibodies were removed by chromatography using non-phosphopeptide.
Buffer	PBS (without Mg2+ and Ca2+, pH 7.4), 150mM NaCl, 0.02% Sodium azide and 50% Glycerol.
Preservative	0.02% Sodium azide
Stabilizer	50% Glycerol
Concentration	1 mg/ml
Storage instruction	For continuous use, store undiluted antibody at 2-8°C for up to a week. For long-term storage, aliquot and store at -20°C. Storage in frost free freezers is not recommended. Avoid repeated freeze/thaw cycles. Suggest spin the vial prior to opening. The antibody solution should be gently mixed before use.

Bioinformation

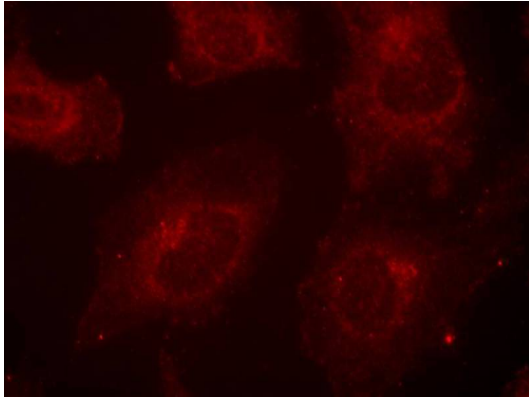
Database links	<a href="#">GeneID: 14388 Mouse</a> <a href="#">GeneID: 2549 Human</a> <a href="#">Swiss-port # Q13480 Human</a> <a href="#">Swiss-port # Q9QYY0 Mouse</a>
Gene Symbol	GAB1
Gene Full Name	GRB2-associated binding protein 1
Background	The protein encoded by Gab1 is a member of the IRS1-like multisubstrate docking protein family. It is an important mediator of branching tubulogenesis and plays a central role in cellular growth response, transformation and apoptosis. Two transcript variants encoding different isoforms have been found for this gene.
Function	Adapter protein that plays a role in intracellular signaling cascades triggered by activated receptor-type kinases. Plays a role in FGFR1 signaling. Probably involved in signaling by the epidermal growth factor receptor (EGFR) and the insulin receptor (INSR). [UniProt]
Research Area	Cancer antibody; Cell Biology and Cellular Response antibody; Cell Death antibody; Signaling Transduction antibody
Calculated Mw	77 kDa
PTM	Phosphorylated in response to FGFR1 activation. Phosphorylated on tyrosine residue(s) by the epidermal growth factor receptor (EGFR) and the insulin receptor (INSR). Tyrosine phosphorylation of GAB1 mediates interaction with several proteins that contain SH2 domains. Phosphorylated on tyrosine residues by HCK upon IL6 signaling.

Images



ARG51770 anti-GAB1 phospho (Tyr627) antibody WB image

Western blot: Extracts from 293 cells untreated or treated with EGF stained with ARG51770 anti-GAB1 phospho (Tyr627) antibody.



ARG51770 anti-GAB1 phospho (Tyr627) antibody ICC/IF image

Immunofluorescence: methanol-fixed HeLa cells stained with ARG51770 anti-GAB1 phospho (Tyr627) antibody.