

ARG51809 anti-Cofilin 1 / Cofilin 2 phospho (Tyr88) antibody

Package: 100 µl, 50 µl
Store at: -20°C

Summary

Product Description	Rabbit Polyclonal antibody recognizes Cofilin 1 / Cofilin 2 phospho (Tyr88)
Tested Reactivity	Hu, Ms
Tested Application	IHC-P, WB
Host	Rabbit
Clonality	Polyclonal
Isotype	IgG
Target Name	Cofilin 1 / Cofilin 2
Species	Human
Immunogen	Peptide sequence around phosphorylation site of tyrosine 88 (A-T-Y(p)-E-T) derived from Human cofilin1/cofilin2.
Conjugation	Un-conjugated
Alternate Names	Cofilin, muscle isoform; NEM7; Cofilin-2

Application Instructions

Application table	Application	Dilution
	IHC-P	1:50 - 1:100
	WB	1:500 - 1:1000

Application Note * The dilutions indicate recommended starting dilutions and the optimal dilutions or concentrations should be determined by the scientist.

Properties

Form	Liquid
Purification	Antibodies were produced by immunizing rabbits with KLH-conjugated synthetic phosphopeptide. Antibodies were purified by affinity-chromatography using epitope-specific phosphopeptide. In addition, non-phospho specific antibodies were removed by chromatography using non-phosphopeptide.
Buffer	PBS (without Mg ²⁺ and Ca ²⁺ , pH 7.4), 150mM NaCl, 0.02% Sodium azide and 50% Glycerol.
Preservative	0.02% Sodium azide
Stabilizer	50% Glycerol
Concentration	1 mg/ml
Storage instruction	For continuous use, store undiluted antibody at 2-8°C for up to a week. For long-term storage, aliquot and store at -20°C. Storage in frost free freezers is not recommended. Avoid repeated freeze/thaw cycles. Suggest spin the vial prior to opening. The antibody solution should be gently mixed before use.

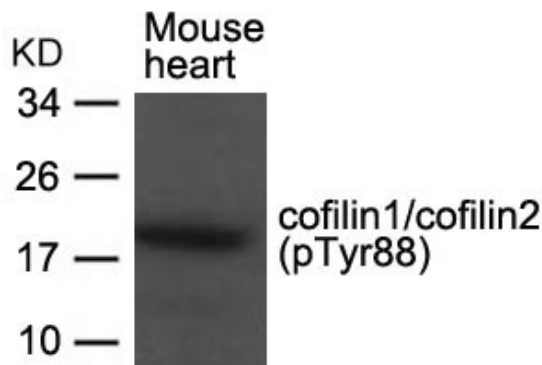
Note

For laboratory research only, not for drug, diagnostic or other use.

Bioinformation

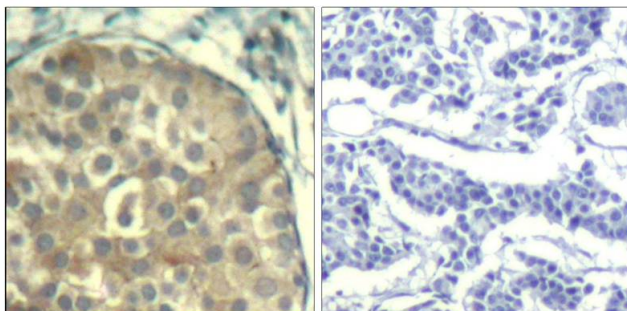
Database links	GeneID: 1073 Human GeneID: 12632 Mouse Swiss-port # P45591 Mouse Swiss-port # Q9Y281 Human
Gene Symbol	CFL2
Gene Full Name	cofilin 2 (muscle)
Background	Controls reversibly actin polymerization and depolymerization in a pH-sensitive manner. It has the ability to bind G- and F-actin in a 1:1 ratio of cofilin to actin. It is the major component of intranuclear and cytoplasmic actin rods.
Function	Controls reversibly actin polymerization and depolymerization in a pH-sensitive manner. It has the ability to bind G- and F-actin in a 1:1 ratio of cofilin to actin. It is the major component of intranuclear and cytoplasmic actin rods (By similarity). [UniProt]
Research Area	Signaling Transduction antibody
Calculated Mw	19 kDa
PTM	The phosphorylation of Ser-24 may prevent recognition of the nuclear localization signal.

Images



ARG51809 anti-Cofilin 1 / Cofilin 2 phospho (Tyr88) antibody WB image

Western blot: Extracts from Mouse heart tissue stained with ARG51809 anti-Cofilin 1 / Cofilin 2 phospho (Tyr88) antibody.



ARG51809 anti-Cofilin 1 / Cofilin 2 phospho (Tyr88) antibody IHC-P image

Immunohistochemistry: Paraffin-embedded Human breast carcinoma tissue stained with ARG51809 anti-Cofilin 1 / Cofilin 2 phospho (Tyr88) antibody (left) or the same antibody preincubated with blocking peptide (right).