

ARG51814 anti-eIF4B phospho (Ser422) antibody

Package: 100 µl, 50 µl
Store at: -20°C

Summary

Product Description	Rabbit Polyclonal antibody recognizes eIF4B phospho (Ser422)
Tested Reactivity	Hu, Ms
Tested Application	IHC-P, WB
Host	Rabbit
Clonality	Polyclonal
Isotype	IgG
Target Name	eIF4B
Species	Human
Immunogen	Peptide sequence around phosphorylation site of Serine 422 (T-G-S(p)-E-S) derived from Human eIF4B.
Conjugation	Un-conjugated
Alternate Names	EIF-4B; eIF-4B; PRO1843; Eukaryotic translation initiation factor 4B

Application Instructions

Application table	Application	Dilution
	IHC-P	1:50 - 1:100
	WB	1:500 - 1:1000
Application Note	* The dilutions indicate recommended starting dilutions and the optimal dilutions or concentrations should be determined by the scientist.	

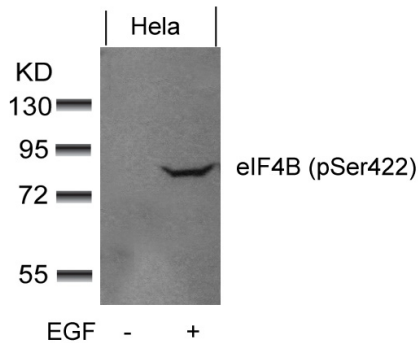
Properties

Form	Liquid
Purification	Antibodies were produced by immunizing rabbits with KLH-conjugated synthetic phosphopeptide. Antibodies were purified by affinity-chromatography using epitope-specific phosphopeptide. In addition, non-phospho specific antibodies were removed by chromatography using non-phosphopeptide.
Buffer	PBS (without Mg ²⁺ and Ca ²⁺ , pH 7.4), 150mM NaCl, 0.02% Sodium azide and 50% Glycerol.
Preservative	0.02% Sodium azide
Stabilizer	50% Glycerol
Concentration	1 mg/ml
Storage instruction	For continuous use, store undiluted antibody at 2-8°C for up to a week. For long-term storage, aliquot and store at -20°C. Storage in frost free freezers is not recommended. Avoid repeated freeze/thaw cycles. Suggest spin the vial prior to opening. The antibody solution should be gently mixed before use.
Note	For laboratory research only, not for drug, diagnostic or other use.

Bioinformation

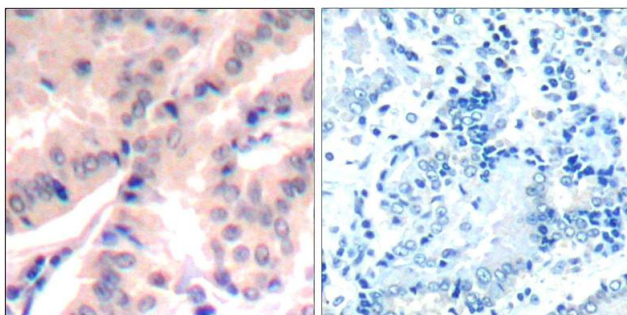
Database links	GeneID: 1975 Human GeneID: 75705 Mouse Swiss-port # P23588 Human Swiss-port # Q8BGD9 Mouse
Gene Symbol	EIF4B
Gene Full Name	eukaryotic translation initiation factor 4B
Background	Required for the binding of mRNA to ribosomes. Functions in close association with EIF4-F and EIF4-A. Binds near the 5'-terminal cap of mRNA in presence of EIF-4F and ATP. Promotes the ATPase activity and the ATP-dependent RNA unwinding activity of both EIF4-A and EIF4-F.
Function	Required for the binding of mRNA to ribosomes. Functions in close association with EIF4-F and EIF4-A. Binds near the 5'-terminal cap of mRNA in presence of EIF-4F and ATP. Promotes the ATPase activity and the ATP-dependent RNA unwinding activity of both EIF4-A and EIF4-F. [UniProt]
Research Area	Gene Regulation antibody
Calculated Mw	69 kDa
PTM	Phosphorylated at Ser-422 by RPS6KA1 and RPS6KB1; phosphorylation enhances the affinity of EIF4B for the EIF3 complex.

Images



ARG51814 anti-eIF4B phospho (Ser422) antibody WB image

Western blot: Extracts from HeLa cells untreated or treated with EGF stained with ARG51814 anti-eIF4B phospho (Ser422) antibody.



ARG51814 anti-eIF4B phospho (Ser422) antibody IHC-P image

Immunohistochemistry: Paraffin-embedded Human lung carcinoma tissue stained with ARG51814 anti-eIF4B phospho (Ser422) antibody (left) or the same antibody preincubated with blocking peptide (right).