

ARG52235 anti-Beclin 1 phospho (Ser295) antibody

Package: 50 µl
Store at: -20°C

Summary

| | |
|---------------------|---|
| Product Description | Rabbit Polyclonal antibody recognizes Beclin 1 phospho (Ser295) |
| Tested Reactivity | Hu |
| Predict Reactivity | Ms, Bov, Chk, Dog, NHuPrm, Sheep, Xenopus laevis, Zfsh |
| Tested Application | WB |
| Host | Rabbit |
| Clonality | Polyclonal |
| Isotype | IgG |
| Target Name | Beclin 1 |
| Species | Human |
| Immunogen | Synthetic phospho-peptide corresponding to amino acid residues surrounding Ser295 conjugated to KLH |
| Conjugation | Un-conjugated |
| Alternate Names | BECN1; Beclin 1; VPS30; ATG6; Coiled-Coil Myosin-Like BCL2-Interacting Protein; Beclin 1, Autophagy Related; Beclin-1; Beclin 1 (Coiled-Coil, Moesin-Like BCL2 Interacting Protein); Beclin 1 (Coiled-Coil, Moesin-Like BCL2-Interacting Protein); ATG6 Autophagy Related 6 Homolog (S. Cerevisiae); Testis Secretory Sperm-Binding Protein Li 215e; ATG6 Autophagy Related 6 Homolog; Beclin1-Gamma; Protein GT197; Beclin1-Beta; Beclin1; GT197 |

Application Instructions

| | | |
|-------------------|--|----------|
| Application table | Application | Dilution |
| | WB | 1:250 |
| Application Note | Specific for the ~60k beclin1 protein phosphorylated at Ser295. Immunolabeling of the beclin-1 band is eliminated in the beclin-1 alanine substitution mutant. * The dilutions indicate recommended starting dilutions and the optimal dilutions or concentrations should be determined by the scientist. | |

Properties

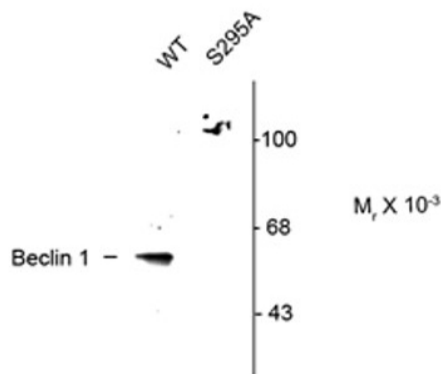
| | |
|---------------------|---|
| Form | Liquid |
| Purification | Affinity Purified |
| Buffer | 10 mM HEPES (pH 7.5), 150 mM NaCl, 0.1 mg/ml BSA and 50% Glycerol |
| Stabilizer | 0.1 mg/ml BSA, 50% Glycerol |
| Storage instruction | For continuous use, store undiluted antibody at 2-8°C for up to a week. For long-term storage, aliquot and store at -20°C. Storage in frost free freezers is not recommended. Avoid repeated freeze/thaw cycles. Suggest spin the vial prior to opening. The antibody solution should be gently mixed before use. |

Note For laboratory research only, not for drug, diagnostic or other use.

Bioinformation

| | |
|-----------------------|--|
| Database links | GeneID: 8678 Human Swiss-port # Q14457 Human |
| Gene Symbol | BECN1 |
| Gene Full Name | beclin 1, autophagy related |
| Background | This gene encodes a protein that regulates autophagy, a catabolic process of degradation induced by starvation. The encoded protein is a component of the phosphatidylinositol-3-kinase (PI3K) complex which mediates vesicle-trafficking processes. This protein is thought to play a role in multiple cellular processes, including tumorigenesis, neurodegeneration and apoptosis. Alternative splicing results in multiple transcript variants. [provided by RefSeq, Sep 2015] |
| Function | Protects against infection by a neurovirulent strain of Sindbis virus. May play a role in antiviral host defense. [UniProt] |
| Highlight | Related products: Beclin 1 antibodies ; Beclin 1 Duos / Panels ; |
| Research Area | Cancer antibody; Cell Death antibody; Gene Regulation antibody; Metabolism antibody; Microbiology and Infectious Disease antibody; Autophagy Study antibody |
| Calculated Mw | 52 kDa |
| PTM | Acetylation, Isopeptide bond, Phosphoprotein, Ubl conjugation. [UniProt] |
| Cellular Localization | Cytoplasm, Cytoplasmic vesicle, Endoplasmic reticulum, Endosome, Golgi apparatus, Membrane, Mitochondrion, Nucleus. [UniProt] |

Images



ARG52235 anti-Beclin 1 phospho (Ser295) antibody WB image

Western blot: beclin-1 expressed stained with ARG52235 anti-Beclin 1 phospho (Ser295) antibody at 1: 250 dilution in HeLa cells showing specific immunolabeling of beclin-1 in wild-type (WT), in addition, this immunolabeling is eliminated in the beclin-1 alanine substitution mutant (S295A) samples.