

ARG52378 anti-NSF antibody

Package: 50 µl
Store at: -20°C

Summary

Product Description	Rabbit Polyclonal antibody recognizes NSF
Tested Reactivity	Rat
Predict Reactivity	Hu, Ms
Tested Application	WB
Host	Rabbit
Clonality	Polyclonal
Isotype	IgG
Target Name	NSF
Species	Rat
Immunogen	Synthetic peptide corresponding to amino acid residues from the C-terminal region conjugated to KLH
Conjugation	Un-conjugated
Alternate Names	SKD2; N-ethylmaleimide-sensitive fusion protein; Vesicular-fusion protein NSF; Vesicle-fusing ATPase; NEM-sensitive fusion protein; EC 3.6.4.6

Application Instructions

Application table	Application	Dilution
	WB	1:1000
Application Note	Specific for ~75k NSF protein. * The dilutions indicate recommended starting dilutions and the optimal dilutions or concentrations should be determined by the scientist.	

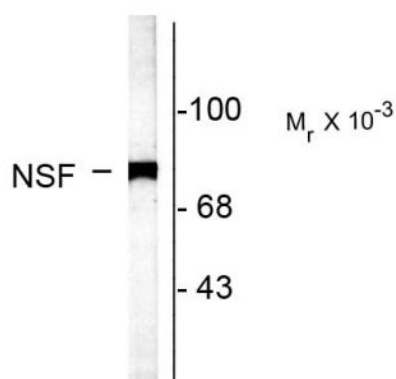
Properties

Form	Liquid
Purification	Affinity Purified
Buffer	10 mM HEPES (pH 7.5), 150 mM NaCl, 0.1 mg/ml BSA and 50% Glycerol
Stabilizer	0.1 mg/ml BSA, 50% Glycerol
Storage instruction	For continuous use, store undiluted antibody at 2-8°C for up to a week. For long-term storage, aliquot and store at -20°C. Storage in frost free freezers is not recommended. Avoid repeated freeze/thaw cycles. Suggest spin the vial prior to opening. The antibody solution should be gently mixed before use.
Note	For laboratory research only, not for drug, diagnostic or other use.

Bioinformation

Database links	GeneID: 60355 Rat Swiss-port # Q9QUL6 Rat
Gene Symbol	NSF
Gene Full Name	N-ethylmaleimide-sensitive factor
Background	<p>NSF (N-ethylmaleimide sensitive fusion protein) is a critical component of the SNARE (soluble NSF attachment protein receptors) protein complex that is involved in synaptic vesicle trafficking. Specifically, NSF has been found to be essential in membrane fusion. Furthermore, NSF has been recently demonstrated to bind other protein complexes such as AMPA receptor subunits (GluR2), GATE-16, LMA-1 and Rabs suggesting a more diverse role in the assembly of various protein complexes (Whiteheart et al., 2004).</p>
Research Area	Metabolism antibody; Neuroscience antibody; Signaling Transduction antibody
Calculated Mw	83 kDa
PTM	Phosphorylation at Ser-569 interferes with homohexamerization.

Images



ARG52378 anti-NSF antibody WB image

Western blot: Rat caudate lysate stained with ARG52378 anti-NSF antibody showing specific labeling of the ~75k NSF protein.