

ARG52408
anti-Rabphilin 3A phospho (Ser234) antibodyPackage: 50 µl
Store at: -20°C

Summary

Product Description	Rabbit Polyclonal antibody recognizes Rabphilin 3A phospho (Ser234)
Tested Reactivity	Rat
Predict Reactivity	Ms
Tested Application	IHC-P, WB
Host	Rabbit
Clonality	Polyclonal
Isotype	IgG
Target Name	Rabphilin 3A
Species	Rat
Immunogen	Synthetic phospho-peptide corresponding to amino acid residues surrounding Ser234 conjugated to KLH
Conjugation	Un-conjugated
Alternate Names	Rabphilin-3A; Exophilin-1

Application Instructions

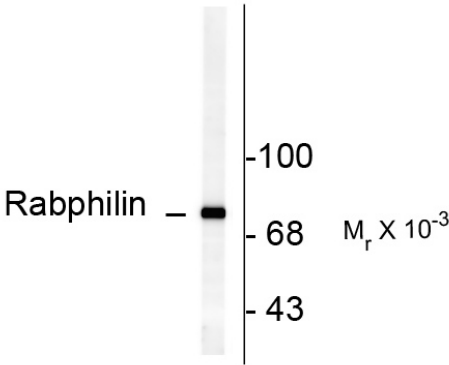
Application table	Application	Dilution
	IHC-P	1:400
	WB	1:1000
Application Note	<p>Specific for the ~82k rabphilin protein phosphorylated at Ser234. The immunolabeling of the rabphilin band was completely blocked by the phosphopeptide used as antigen while the dephosphopeptide had no effect on the immunolabeling</p> <p>* The dilutions indicate recommended starting dilutions and the optimal dilutions or concentrations should be determined by the scientist.</p>	

Properties

Form	Liquid
Purification	Affinity Purified
Buffer	10 mM HEPES (pH 7.5), 150 mM NaCl, 0.1 mg/ml BSA and 50% Glycerol
Stabilizer	0.1 mg/ml BSA, 50% Glycerol
Storage instruction	For continuous use, store undiluted antibody at 2-8°C for up to a week. For long-term storage, aliquot and store at -20°C. Storage in frost free freezers is not recommended. Avoid repeated freeze/thaw cycles. Suggest spin the vial prior to opening. The antibody solution should be gently mixed before use.
Note	For laboratory research only, not for drug, diagnostic or other use.

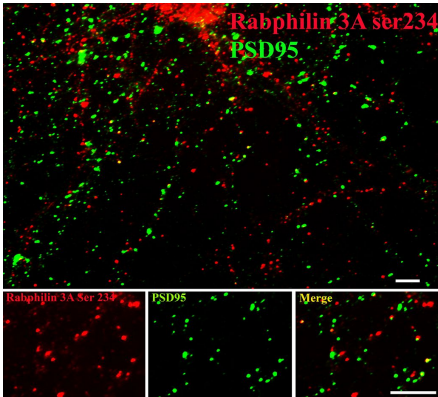
Database links	GeneID: 171039 Rat Swiss-port # P47709 Rat
Gene Symbol	RPH3A
Gene Full Name	rabphilin 3A
Background	Rabphilin-3A is a peripheral membrane protein that binds Ca2+ and phospholipids and is attached to synaptic vesicle membranes (Geppert et al., 1994;Li et al., 1994). The expression of rabphilin 3A is reduced in an animal model of Huntington’s disease(Smith et al., 2005). Rabphilin can be phosphorylated at Ser234 by both CAM kinase II and PKA and this phosphorylation has been suggested to regulate neuronal activity during development in a synapse-specific manner (Fykse et al., 1995;Foletti and Scheller, 2001).
Research Area	Neuroscience antibody
Calculated Mw	77 kDa

Images



ARG52408 anti-Rabphilin 3A phospho (Ser234) antibody WB image

Western blot: Rat brain lysate showing specific immunolabeling of the ~82k rabphilin 3A phosphorylated at Ser 234 stained with ARG52408 anti-Rabphilin 3A phospho (Ser234) antibody.



ARG52408 anti-Rabphilin 3A phospho (Ser234) antibody IHC image

Immunohistochemistry: 14 DIV Rat cortical neurons showing Rabphilin 3A when phosphorylated at Ser234 stained with ARG52408 anti-Rabphilin 3A phospho (Ser234) antibody in red and PSD95 in green.