

ARG52438 anti-Synaptotagmin phospho (Ser309) antibody

Package: 50 µl
Store at: -20°C

Summary

| | |
|---------------------|---|
| Product Description | Rabbit Polyclonal antibody recognizes Synaptotagmin phospho (Ser309) |
| Tested Reactivity | Rat |
| Predict Reactivity | Hu, Ms, Bov, Chk, Dog, NHuPrm, Zfsh |
| Tested Application | IHC-P, WB |
| Host | Rabbit |
| Clonality | Polyclonal |
| Isotype | IgG |
| Target Name | Synaptotagmin |
| Species | Rat |
| Immunogen | Synthetic phospho-peptide corresponding to amino acid residues surrounding Ser309 conjugated to KLH |
| Conjugation | Un-conjugated |
| Alternate Names | P65; Synaptotagmin I; Sytl; SVP65; SYT; p65; Synaptotagmin-1 |

Application Instructions

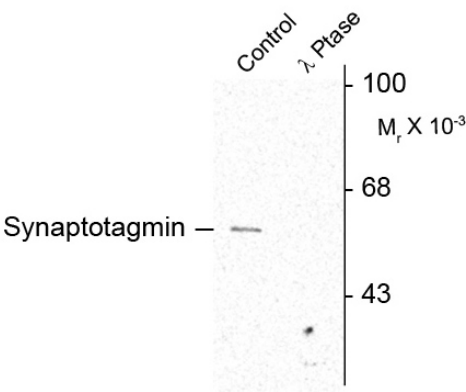
| Application table | Application | Dilution |
|-------------------|--|----------|
| | IHC-P | 1:400 |
| | WB | 1:1000 |
| Application Note | Specific for the ~60k-62k synaptotagmin protein phosphorylated at Ser309 * The dilutions indicate recommended starting dilutions and the optimal dilutions or concentrations should be determined by the scientist. | |

Properties

| | |
|---------------------|---|
| Form | Liquid |
| Purification | Affinity Purified |
| Buffer | 10 mM HEPES (pH 7.5), 150 mM NaCl, 0.1 mg/ml BSA and 50% Glycerol |
| Stabilizer | 0.1 mg/ml BSA, 50% Glycerol |
| Storage instruction | For continuous use, store undiluted antibody at 2-8°C for up to a week. For long-term storage, aliquot and store at -20°C. Storage in frost free freezers is not recommended. Avoid repeated freeze/thaw cycles. Suggest spin the vial prior to opening. The antibody solution should be gently mixed before use. |
| Note | For laboratory research only, not for drug, diagnostic or other use. |

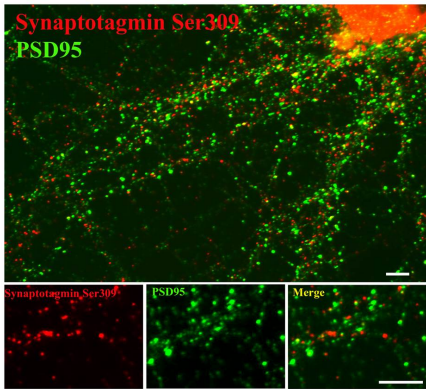
| | |
|----------------|--|
| Database links | GeneID: 25716 Rat Swiss-port # P21707 Rat |
| Gene Symbol | SYT1 |
| Gene Full Name | synaptotagmin I |
| Background | Synaptotagmin is widely regarded as the primary calcium sensor for synaptic vesicle exocytosis (Fernandez-Chacon et al., 2001; Wang et al., 2003). Moreover, recent studies indicate that the protein also plays a key role in endocytosis (Poskanzer et al., 2003). Synaptotagmin can be phosphorylated by multiple protein kinases and this may play a key role in modulation of synaptotagmin’s ability to influence both the exocytotic and endocytotic components of synaptic transmission (Hilfiker et al., 1999; Lee et al., 2004). |
| Research Area | Cancer antibody; Metabolism antibody; Neuroscience antibody; Signaling Transduction antibody |
| Calculated Mw | 48 kDa |

Images



ARG52438 anti-Synaptotagmin phospho (Ser309) antibody WB image

Western blot: Rat cortex lysate showing specific immunolabeling of the ~62k synaptotagmin stained with ARG52438 anti-Synaptotagmin phospho (Ser309) antibody.



ARG52438 anti-Synaptotagmin phospho (Ser309) antibody IHC image

Immunohistochemistry: 14 DIV Rat cortical neurons showing synaptotagmin when phosphorylated at Ser309 stained with ARG52438 anti-Synaptotagmin phospho (Ser309) antibody in red and PSD95 in green.