

## ARG52439 anti-Syntaxin antibody [SP8]

Package: 50 µl  
Store at: -20°C

### Summary

Product Description	Mouse Monoclonal antibody [SP8] recognizes Syntaxin
Tested Reactivity	Hu, Ms, Rat, Hm, Pig
Tested Application	IHC-P, WB
Host	Mouse
Clonality	Monoclonal
Clone	SP8
Isotype	IgG1
Target Name	Syntaxin
Species	Human
Immunogen	Synaptic immunoprecipitate (crude) from human brain
Conjugation	Un-conjugated
Alternate Names	HPC-1; STX1; Syntaxin-1A; SYN1A; Neuron-specific antigen HPC-1; P35-1

### Application Instructions

Application table	Application	Dilution
	IHC-P	1:100
	WB	1:500 - 1:2000

**Application Note** The antibody is specific for the ~ 36 kDa syntaxin protein in Western blots of Rat brain lysate. The antibody has also been used for immunohistochemistry on formalin fixed, vibratome sections. Does not work on paraffin sections.  
\* The dilutions indicate recommended starting dilutions and the optimal dilutions or concentrations should be determined by the scientist.

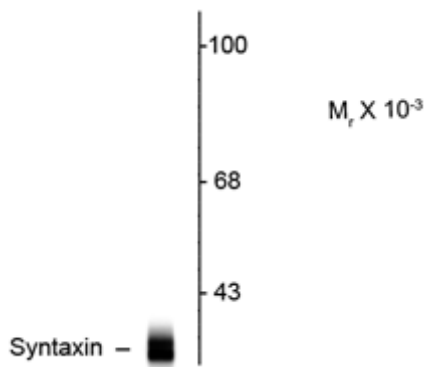
### Properties

Form	Liquid
Purification	Protein G purified
Buffer	10 mM HEPES (pH 7.5), 150 mM NaCl, 0.1 mg/ml BSA and 50% Glycerol
Stabilizer	0.1 mg/ml BSA, 50% Glycerol
Storage instruction	For continuous use, store undiluted antibody at 2-8°C for up to a week. For long-term storage, aliquot and store at -20°C. Storage in frost free freezers is not recommended. Avoid repeated freeze/thaw cycles. Suggest spin the vial prior to opening. The antibody solution should be gently mixed before use.
Note	For laboratory research only, not for drug, diagnostic or other use.

## Bioinformation

Gene Symbol	STX1A
Gene Full Name	syntaxin 1A (brain)
Background	Syntaxins are a family of proteins involved in the docking of synaptic vesicles with the plasma membrane. Syntaxin, along with synaptobrevin and SNAP-25, forms the SNARE complex which mediates synaptic vesicle fusion and exocytosis. Binding of Munc18-1 to the N-terminus of syntaxin 1 has been demonstrated to be essential for exocytic membrane fusion (Khvotchev et al., 2007). Decreased levels of phosphorylated syntaxin 1 in the prefrontal cortex have recently been correlated with schizophrenia (Castillo et al., 2010).
Research Area	Cancer antibody; Metabolism antibody; Neuroscience antibody; Signaling Transduction antibody
Calculated Mw	33 kDa
PTM	Phosphorylated by CK2 (By similarity). Phosphorylation at Ser-188 by DAPK1 significantly decreases its interaction with STXBP1.

## Images



ARG52439 anti-Syntaxin antibody [SP8] WB image

Western Blot: rat cortex lysate showing specific immunolabeling of the ~ 36k syntaxin 1A protein stained with Syntaxin antibody [SP8] (ARG52439).