

## ARG52461 anti-Tyrosine Hydroxylase antibody

Package: 50 µl  
Store at: -20°C

### Summary

Product Description	Rabbit Polyclonal antibody recognizes Tyrosine Hydroxylase
Tested Reactivity	Hu, Ms, Rat, Mamm
Tested Application	ICC/IF, IHC-Fr, IHC-P, WB
Host	Rabbit
Clonality	Polyclonal
Isotype	IgG
Target Name	Tyrosine Hydroxylase
Species	Rat
Immunogen	SDS-denatured rat tyrosine hydroxylase purified from pheochromocytoma
Conjugation	Un-conjugated
Alternate Names	DYT14; TYH; Tyrosine 3-monoxygenase; Tyrosine 3-hydroxylase; TH; DYT5b; EC 1.14.16.2

### Application Instructions

Application table	Application	Dilution
	ICC/IF	1:1000
	IHC-Fr	1:1000
	IHC-P	1:500 - 1:1500
	WB	1:1000

**Application Note** Specific for the ~60k tyrosine hydroxylase protein.  
\* The dilutions indicate recommended starting dilutions and the optimal dilutions or concentrations should be determined by the scientist.

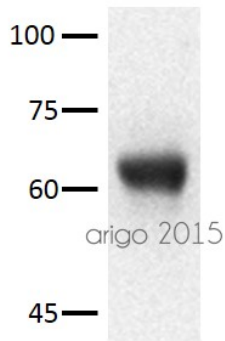
### Properties

Form	Liquid
Purification	Affinity Purified
Buffer	10 mM HEPES (pH 7.5), 150 mM NaCl, 0.1 mg/ml BSA and 50% Glycerol
Stabilizer	0.1 mg/ml BSA, 50% Glycerol
Storage instruction	For continuous use, store undiluted antibody at 2-8°C for up to a week. For long-term storage, aliquot and store at -20°C. Storage in frost free freezers is not recommended. Avoid repeated freeze/thaw cycles. Suggest spin the vial prior to opening. The antibody solution should be gently mixed before use.
Note	For laboratory research only, not for drug, diagnostic or other use.

## Bioinformation

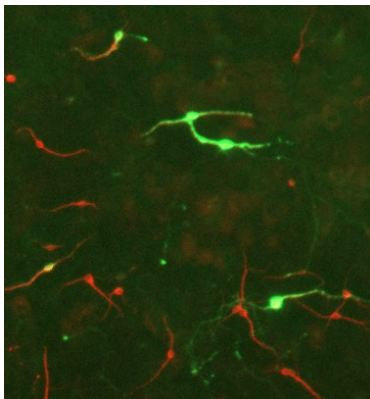
Gene Symbol	TH
Gene Full Name	tyrosine hydroxylase
Background	Tyrosine hydroxylase (TH) is the rate-limiting enzyme in the synthesis of the catecholamines dopamine and norepinephrine. TH antibodies can therefore be used as markers for dopaminergic and noradrenergic neurons in a variety of applications including depression, schizophrenia, Parkinson's disease and drug abuse (Kish et al., 2001; Zhu et al., 2000; Zhu et al., 1999). TH antibodies can also be used to explore basic mechanisms of dopamine and norepinephrine signaling (Witkovsky et al., 2000; Salvatore et al., 2001; Dunkley et al., 2004).
Highlight	Related Antibody Duos and Panels: <a href="#">ARG30212 Phospho Tyrosine Hydroxylase Antibody Panel (Total, pS31, pS40)</a> Related products: <a href="#">Tyrosine Hydroxylase antibodies: Tyrosine Hydroxylase Duos / Panels: Anti-Rabbit IgG secondary antibodies:</a> Related news: <a href="#">Astrocyte-to-neuron conversion for Parkinson's disease treatment</a>
Research Area	Cancer antibody; Metabolism antibody; Neuroscience antibody
Calculated Mw	59 kDa

## Images



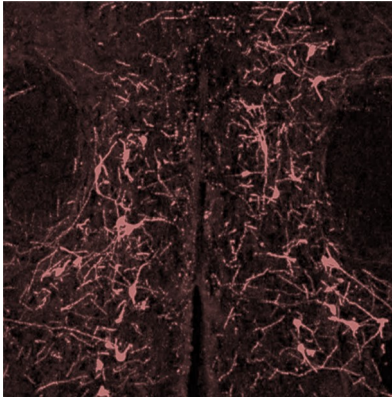
ARG52461 anti-Tyrosine Hydroxylase antibody WB image

Western blot: 30 µg of Mouse brain tissue lysate stained with ARG52461 anti-Tyrosine Hydroxylase antibody at 1:500 dilution.



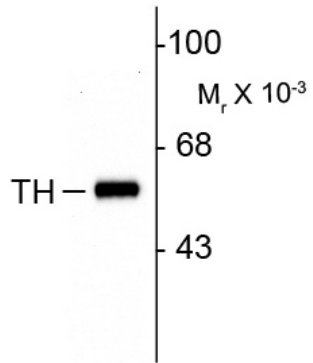
ARG52461 anti-Tyrosine Hydroxylase antibody ICC/IF image

Immunofluorescence: E17 Rat midbrain mixed neuronal cultures stained with [ARG52461](#) anti-Tyrosine Hydroxylase antibody (green) and [ARG52328](#) anti-MAP2 antibody (red).



ARG52461 anti-Tyrosine Hydroxylase antibody IHC-Fr image

Immunohistochemistry: Frozen section of Mouse brain stained with ARG52461 anti-Tyrosine Hydroxylase antibody at 1:1000 dilution.



ARG52461 anti-TH antibody WB image

Western Blot: 10  $\mu$ g of rat caudate lysate showing specific immunolabeling of the ~60k TH protein stained with TH antibody (ARG52461).