

## ARG52472 anti-XIRP1 phospho (Ser295) antibody

Package: 50 µl  
Store at: -20°C

### Summary

Product Description	Rabbit Polyclonal antibody recognizes XIRP1 phospho (Ser295)
Tested Reactivity	Ms
Predict Reactivity	Hu, Rat, Dog, NHuPm
Tested Application	WB
Host	Rabbit
Clonality	Polyclonal
Isotype	IgG
Target Name	XIRP1
Species	Mouse
Immunogen	Synthetic phospho-peptide corresponding to amino acid residues surrounding Ser295 conjugated to KLH
Conjugation	Un-conjugated
Alternate Names	Cardiomyopathy-associated protein 1; CMYA1; Xin; Xin actin-binding repeat-containing protein 1

### Application Instructions

Application table	Application	Dilution
	WB	1:1000
Application Note	<p>Specific for the ~250k and ~150k splice variants of XIRP1 phosphorylated at Ser295. Immunolabeling of the XIRP1 band is blocked by the treatment of the lysate with lambda phosphatase (30 minutes, 800 units / 1 mg protein).</p> <p>* The dilutions indicate recommended starting dilutions and the optimal dilutions or concentrations should be determined by the scientist.</p>	

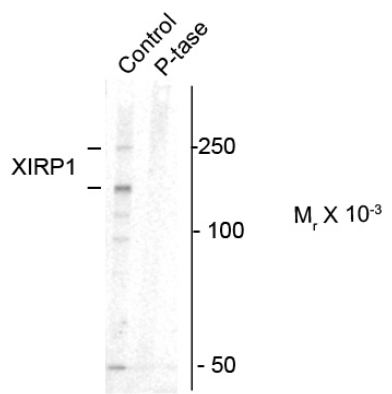
### Properties

Form	Liquid
Purification	Affinity Purified
Buffer	10 mM HEPES (pH 7.5), 150 mM NaCl, 0.1 mg/ml BSA and 50% Glycerol
Stabilizer	0.1 mg/ml BSA, 50% Glycerol
Storage instruction	For continuous use, store undiluted antibody at 2-8°C for up to a week. For long-term storage, aliquot and store at -20°C. Storage in frost free freezers is not recommended. Avoid repeated freeze/thaw cycles. Suggest spin the vial prior to opening. The antibody solution should be gently mixed before use.
Note	For laboratory research only, not for drug, diagnostic or other use.

Bioinformation

Database links	<a href="#">GeneID: 22437 Mouse</a>
Gene Symbol	XIRP1
Gene Full Name	xin actin-binding repeat containing 1
Background	XIRP1 is a member of the Xin family of proteins, containing 16 Xin repeats. The intercalated disk protein Xin protects actin filaments from depolymerization, and is able to bundle actin filaments to interact with $\beta$ -catenin, which is thought to stabilize actin-based cytoskeletons (Choi et al., 2007). The evolutionary emergence of the Xin paralogs may have played a key role in the development of heart chambers with complete endothelial and myocardial layers (Grosskurth et al., 2008). Loss of mXin $\alpha$ (mouse Xin homolog) results in cardiac hypertrophy and cardiomyopathy (Gustafson-Wagner et al., 2007). Phosphorylation of Ser295 is thought to play a key role in XIRP signaling.
Research Area	Signaling Transduction antibody
Calculated Mw	199 kDa

Images



ARG52472 anti-XIRP1 phospho (Ser295) antibody WB image

Western blot: Mouse heart lysate showing specific immunolabeling of the ~250k and ~150k splice variants of the XIRP1 protein phosphorylated at Ser 295 stained with ARG52472 anti-XIRP1 phospho (Ser295) antibody. Immunolabeling is blocked by treatment of the lysate with lambda phosphatase (P-tase).